

WAAS CH 82138 W30A	APP CRS 299°	Rwy Idg TDZE Apt Elev	3638 134 134
--	------------------------	-----------------------------	---

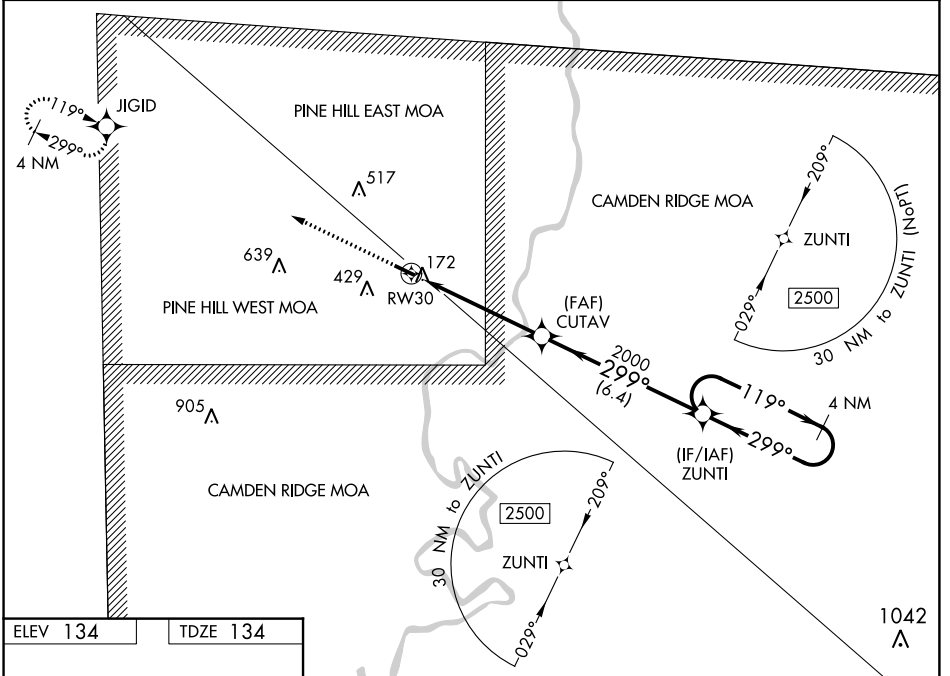
RNAV (GPS) RWY 30

BUTLER/CHOCTAW COUNTY (Ø9A)

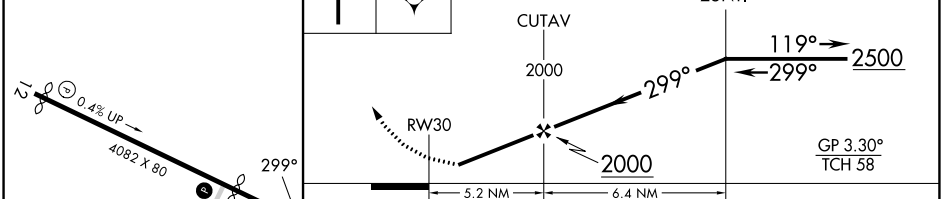
▼ Baro-VNAV NA. DME/DME RNP-0.3 NA. Helicopter visibility reduction below ¾ SM NA.
▲ NA Procedure NA at night. Use Demopolis altimeter setting; when not received, use Key Fld altimeter setting and increase LPV DA to 497, LNAV/VNAV DA to 487; and increase all MDA 60 feet; increase LPV visibility all Cats ½ mile and increase Circling Cat C visibility ¼ mile.

MISSED APPROACH:
Climb to 2500 direct JIGID and hold.

DYA AWOS-3P 119.475	MERIDIAN APP CON * 121.275 348.7	UNICOM 122.8 (CTAF) Ø
-------------------------------	--	---------------------------------



ELEV 134	TDZE 134
----------	----------



CATEGORY	A	B	C	D
LPV DA		450-1	316 (400-1)	NA
LNAV/VNAV DA		440-1	306 (400-1)	NA
LNAV MDA	580-1	446 (500-1)	580-1 3/8 446 (500-1 3/8)	NA
C CIRCLING	680-1 546 (600-1)	800-1 666 (700-1)	800-1 3/4 666 (700-1 3/4)	NA

SE-4, 13 JUN 2024 to 11 JUL 2024

SE-4, 13 JUN 2024 to 11 JUL 2024