

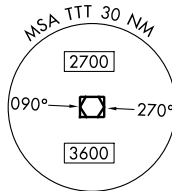
# JOE POOL SEVEN DEPARTURE

REGIONAL DEP CON  
124.3 282.275  
CLNC DEL (when twr closed)  
121.35  
GND CON  
121.875  
MC KINNEY TOWER★  
118.825 (CTAF)

RADAR and DME required.

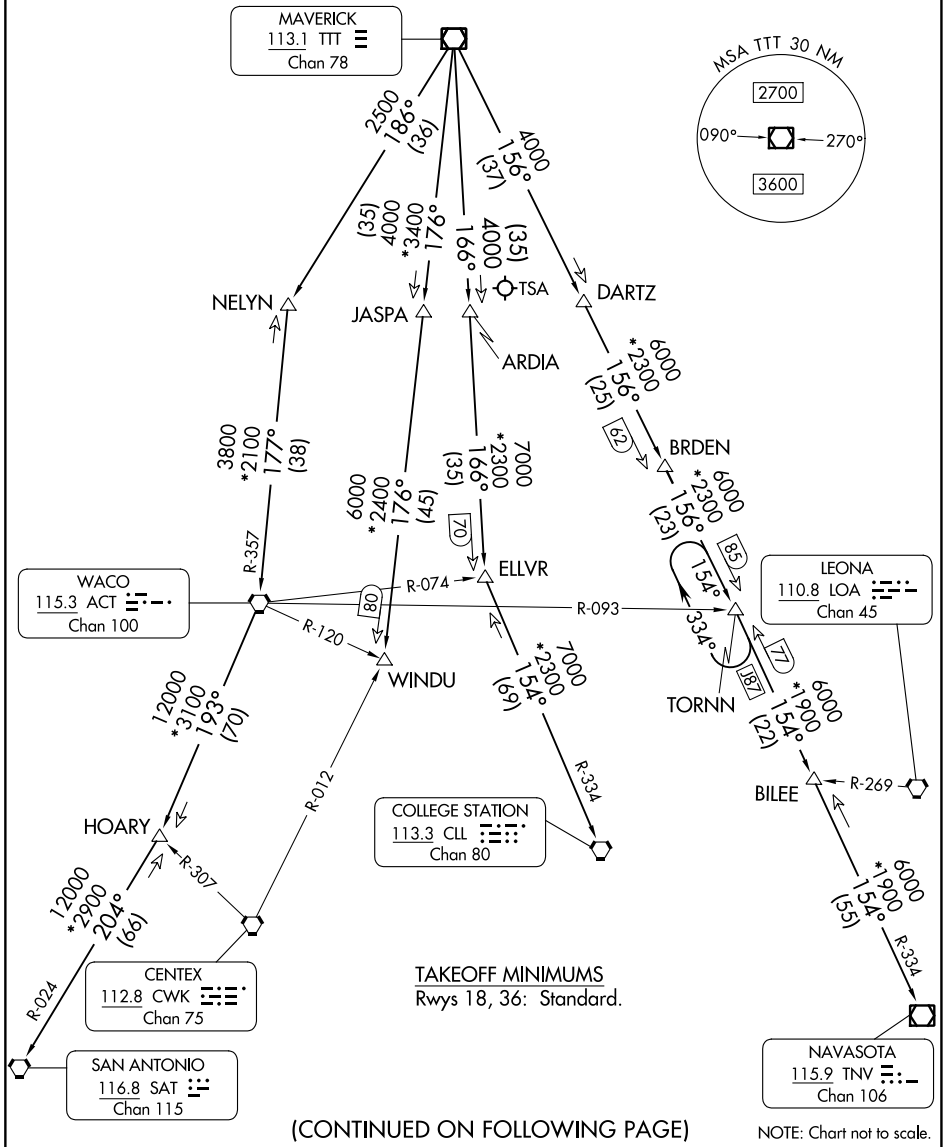
**TOP ALTITUDE:  
ASSIGNED BY ATC**

MAVERICK  
113.1 TTT  
Chan 78



SC-2, 13 JUN 2024 to 11 JUL 2024

SC-2, 13 JUN 2024 to 11 JUL 2024



**TAKEOFF MINIMUMS**  
Rwys 18, 36: Standard.

(CONTINUED ON FOLLOWING PAGE)

NOTE: Chart not to scale.

# JOE POOL SEVEN DEPARTURE