

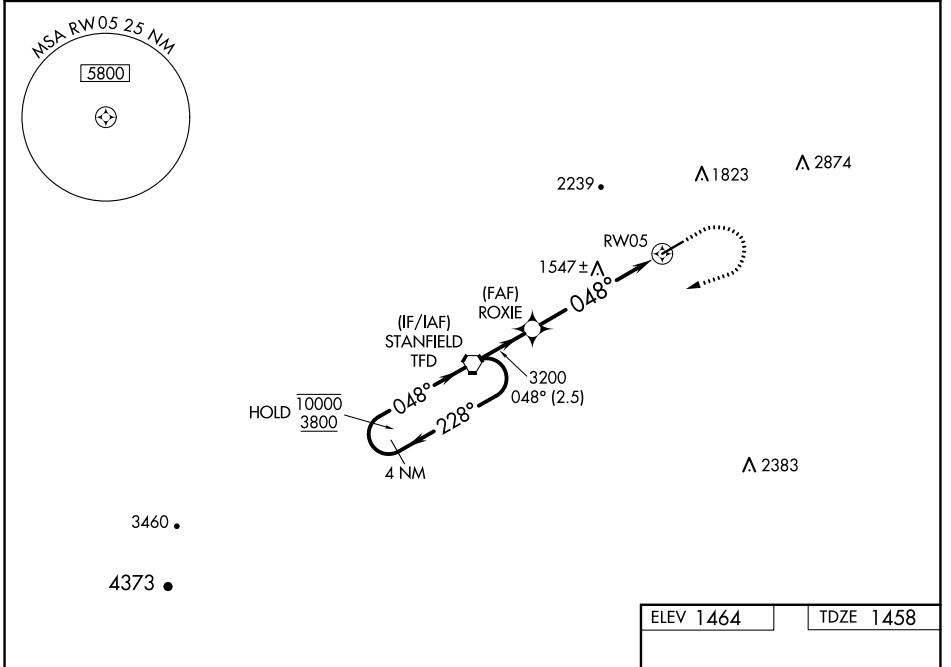
| | | | |
|--|------------------------|-----------------------------|---|
| WAAS CH 61042 W05A | APP CRS 048° | Rwy Idg TDZE Apt Elev | 5200 1458 1464 |
|--|------------------------|-----------------------------|---|

RNAV (GPS) RWY 5

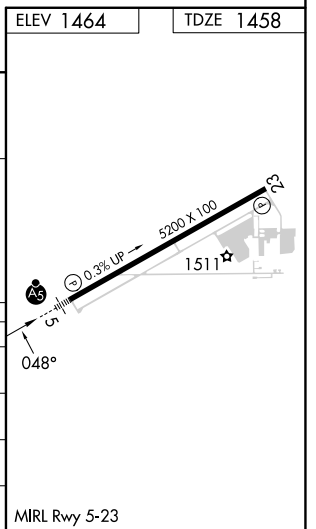
CASA GRANDE MUNI (CGZ)

| | | |
|---|-------|---|
| RNP APCH. | MALSR | MISSED APPROACH: (Do not exceed 240K until TFD VORTAC) Climb to 2000 then climbing right turn to 5900 direct TFD VORTAC and hold. Continue climb in hold to 5900. |
| <p>▼ For uncompensated Baro-VNAV systems, LNAV/VNAV NA below -17°C or above 54°C. Circling NA for Cat C and D northwest of Rwy 5-23. For inoperative ALS, increase LNAV Cat C/D visibility to 1 SM.</p> | | |

| | | |
|----------------------------|--|---------------------------------|
| AWOS-3PT 132.175 | ALBUQUERQUE CENTER 125.4 269.3 | UNICOM 122.7 (CTAF) 0 |
|----------------------------|--|---------------------------------|



| 4 NM Holding Pattern | TFD VORTAC | ROXIE | 2000 | 5900 | TFD |
|----------------------|-------------|----------------|--------------|--------------|-----|
| 10000 ← 228° | 3800 → 048° | 3200 | ↑ | ↷ | ⬠ |
| GP 3.00° | TCH 40 | *1 NM to RWY 5 | *LNAV only | | |
| | 2.5 NM | 4.4 NM | 1 NM | | |
| CATEGORY | A | B | C | D | |
| LPV DA | | 1708-½ | 250 (300-½) | | |
| LNAV/VNAV DA | | 1708-½ | 250 (300-½) | | |
| LNAV MDA | 1800-½ | 342 (400-½) | 1800-⅝ | 342 (400-⅝) | |
| CIRCLING | 1960-1 | 496 (500-1) | 1960-1½ | 2260-2½ | |
| | | | 496 (500-1½) | 796 (800-2½) | |



SW-4, 13 JUN 2024 to 11 JUL 2024

SW-4, 13 JUN 2024 to 11 JUL 2024