

APP CRS	Rwy Idg	<b>5010</b>
<b>271°</b>	TDZE	<b>777</b>
	Apt Elev	<b>778</b>

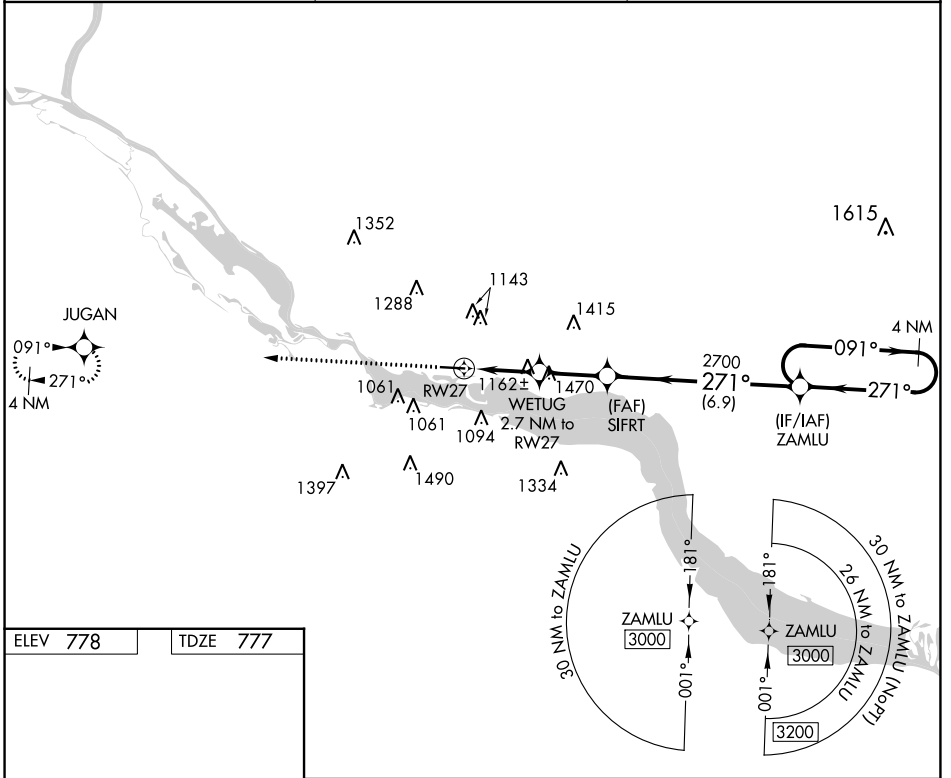
# RNAV (GPS) RWY 27

RED WING RGNL (RGK)

**⚠** DME/DME RNP-0.3 NA. VDP NA with South St. Paul altimeter setting. When local altimeter setting not received, use South St. Paul altimeter setting; increase all MDA 80 feet and visibility LNAV Cat C and Circling Cat C ½ SM and Circling Cat A/B ¼ SM. Helicopter visibility reduction below ¾ SM NA. Inop table does not apply to LNAV Cat C.

**ODALS** MISSED APPROACH: Climb to 3000 direct JUGAN and hold.

AWOS-3 <b>119.25</b>	MINNEAPOLIS APP CON <b>121.2 335.65</b>	UNICOM <b>123.05 (CTAF)</b>
-------------------------	--	--------------------------------



ELEV 778	TDZE 777
----------	----------

HIRL Rwy 9-27

	<p>3000</p> <p>4 NM Holding Pattern</p> <p>ZAMLU</p> <p>271° ← 3000</p> <p>091° →</p>																		
	<p>2.1 NM</p> <p>0.6 NM</p> <p>2.4 NM</p> <p>6.9 NM</p>	<p>WETUG 2.7 NM to RWY 27</p> <p>SIFRT</p> <p>1800</p> <p>2700</p> <p>3.45° TCH 45°</p>			<p>3000</p>														
<table border="1"> <thead> <tr> <th>CATEGORY</th> <th>A</th> <th>B</th> <th>C</th> <th>D</th> </tr> </thead> <tbody> <tr> <td>LNAV MDA</td> <td>1520-¾ 743 (800-¾)</td> <td>1520-1¼ 743 (800-1¼)</td> <td>1520-2 743 (800-2)</td> <td>NA</td> </tr> <tr> <td>CIRCLING</td> <td>1520-1</td> <td>742 (800-1)</td> <td>1640-2½ 862 (900-2½)</td> <td>NA</td> </tr> </tbody> </table>	CATEGORY	A	B	C	D	LNAV MDA	1520-¾ 743 (800-¾)	1520-1¼ 743 (800-1¼)	1520-2 743 (800-2)	NA	CIRCLING	1520-1	742 (800-1)	1640-2½ 862 (900-2½)	NA				
CATEGORY	A	B	C	D															
LNAV MDA	1520-¾ 743 (800-¾)	1520-1¼ 743 (800-1¼)	1520-2 743 (800-2)	NA															
CIRCLING	1520-1	742 (800-1)	1640-2½ 862 (900-2½)	NA															

NC-1, 13 JUN 2024 to 11 JUL 2024

NC-1, 13 JUN 2024 to 11 JUL 2024