

PHILLIPS, WISCONSIN

AL-6663 (FAA)

22223

WAAS CH 53726 W24A	APP CRS 239°	Rwy Idg TDZE 1472 Apt Elev 1497
--	------------------------	---

RNAV (GPS) RWY 24

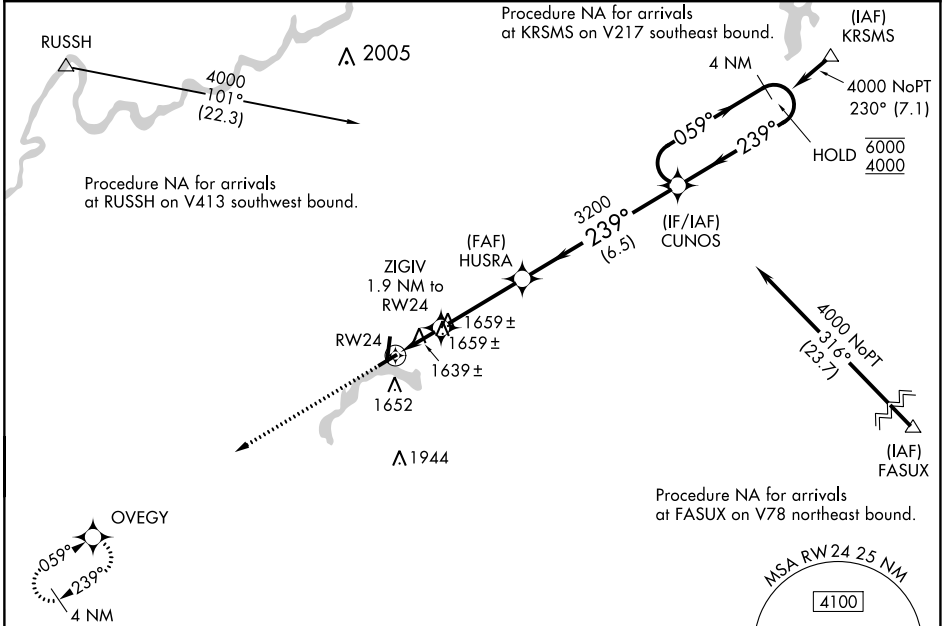
PRICE COUNTY (PBH)

RNP APCH - GPS.

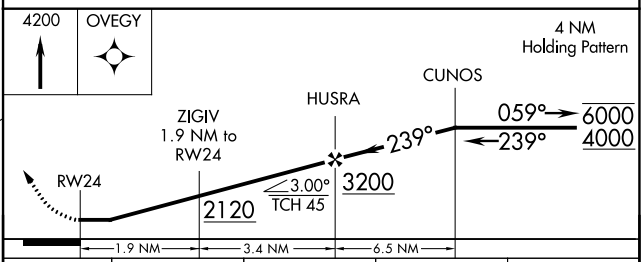
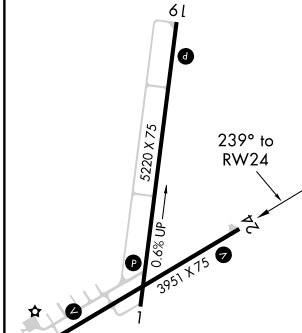
⚠ Rwy 24 helicopter visibility reduction below 1 SM NA. When local altimeter setting not received, use Minocqua-Woodruff altimeter setting and increase all MDAs 100 feet and visibility Cats C and D ½ SM. Straight-in Rwy 24 NA at night, Circling Rwy 6, 24 NA at night.

MISSED APPROACH:
Climb to 4200 direct OVEGY and hold.

AWOS-3 125.875	MINNEAPOLIS CENTER 133.65 281.5	UNICOM 122.8 (CTAF) 0
--------------------------	---	---------------------------------



ELEV 1497	TDZE 1472
------------------	------------------



CATEGORY	A	B	C	D
LP MDA	1900-1	428 (500-1)	1900-1¼	428 (500-1¼)
LNAV MDA	1920-1	448 (500-1)	1920-1⅜	448 (500-1⅜)
CIRCLING	2100-1	603 (700-1)	2100-1¾ 603 (700-1¾)	2260-2½ 763 (800-2½)

REIL Rws 1, 19 and 24
MIRL Rws 1-19 and 6-24

PHILLIPS, WISCONSIN
Orig-D 11AUG22

45°43'N-90°24'W

RNAV (GPS) RWY 24

EC-3, 13 JUN 2024 to 11 JUL 2024