

VOR/DME LRP <b>117.3</b> Chan <b>120</b>	APP CRS <b>272°</b>	Rwy Idg <b>3250</b> TDZE <b>458</b> Apt Elev <b>458</b>
--	------------------------	---

# VOR RWY 28

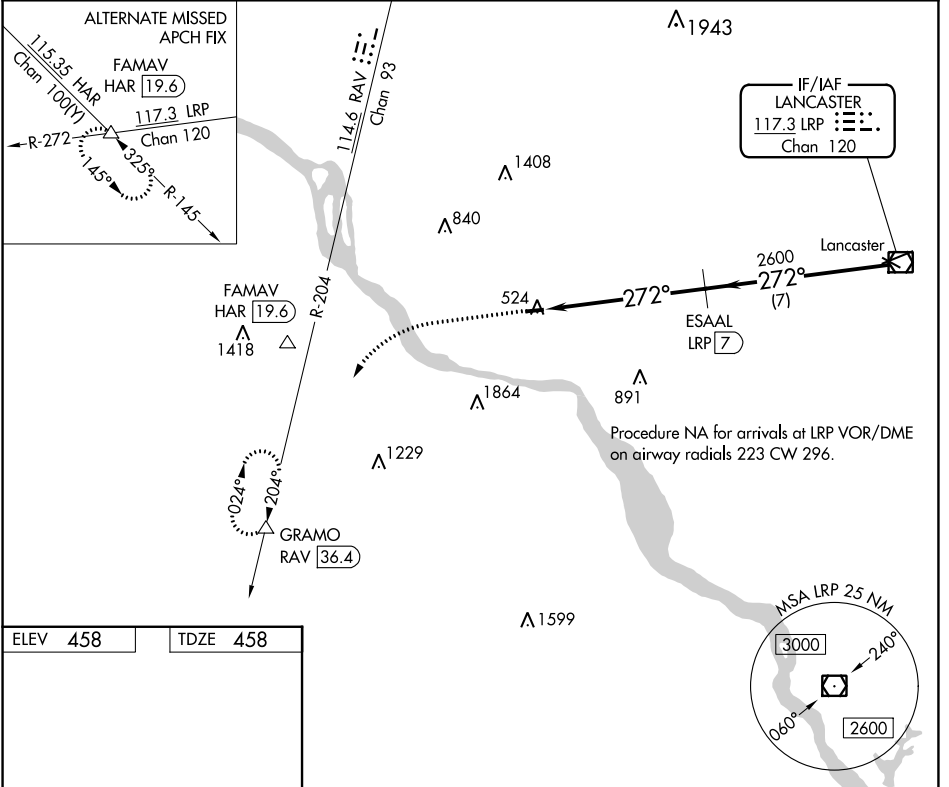
DONEGAL SPRINGS AIRPARK (N71)

**DME required.**

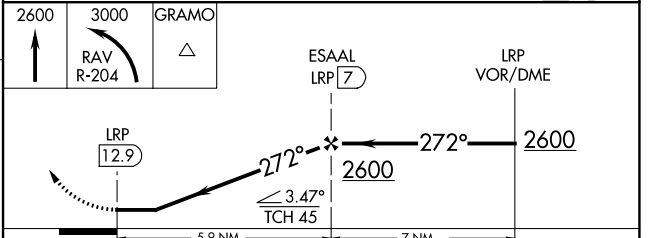
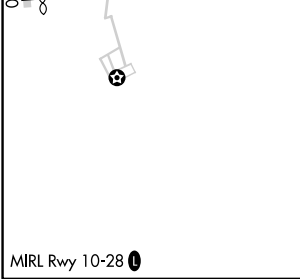
**NA** Use Harrisburg Intl altimeter setting; when not received, use Fort Indiantown Gap altimeter setting and increase all MDAs 20 feet. Rwy 28 helicopter visibility reduction below 1 SM NA. Procedure NA at night.

**MISSED APPROACH:** Climb to 2600 then climbing left turn to 3000 on RAV R-204 to GRAMO/RAV 36.4 DME and hold.

MDT ASOS <b>118.8</b>	HARRISBURG APP CON <b>126.45 281.525</b>	HARRISBURG CLNC DEL <b>127.05</b>	UNICOM <b>122.8 (CTAF)</b>
--------------------------	---	--------------------------------------	-------------------------------



ELEV 458	TDZE 458
----------	----------



CATEGORY	A	B	C	D
S-28	940-1	482 (500-1)	NA	
CIRCLING	940-1 482 (500-1)	960-1 502 (600-1)	NA	

NE-4, 13 JUN 2024 to 11 JUL 2024

NE-4, 13 JUN 2024 to 11 JUL 2024