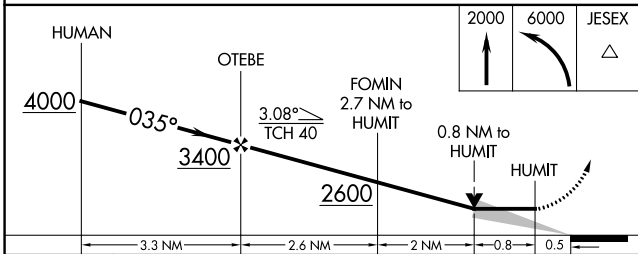
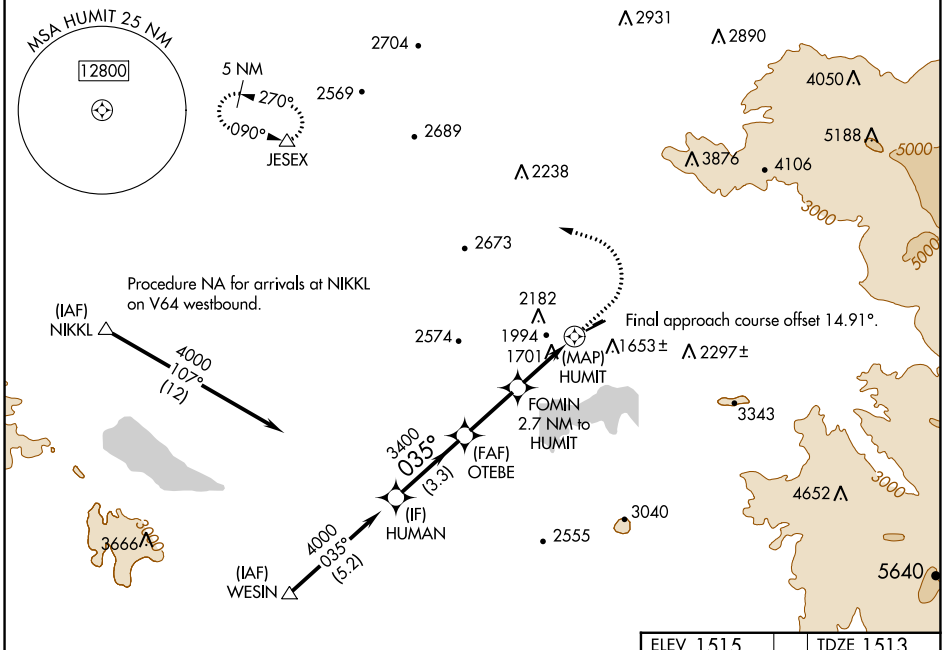


| | | |
|--|------------------------|---|
| WAAS CH 45645 W05A | APP CRS 035° | Rwy Idg 4315 TDZE 1513 Apt Elev 1515 |
|--|------------------------|---|

RNAV (GPS) RWY 5

HEMET-RYAN (HMT)

| | | |
|----------------------------|---|--|
| RNP APCH - GPS. | | MISSED APPROACH: Climb to 2000 then climbing left turn to 6000 direct JESEX and hold, continue climb-in-hold to 6000. *Missed approach requires minimum climb of 400 feet per NM to 3000. |
| AWOS-3PT 118.375 | MARCH APP CON * 133.5 306.975 | UNICOM 123.0 (CTAF) |



| | |
|--------------|-----------|
| ELEV 1515 | TDZE 1513 |
| | |
| MRL Rwy 5-23 | |

| CATEGORY | A | B | C | D |
|-----------|--|--|---|----|
| LP MDA* | 1960-1 | 447 (500-1) | 1960-1 ³ / ₈ 447 (500-1 ³ / ₈) | NA |
| LP MDA | 2460-1 ¹ / ₄ | 947 (1000-1 ¹ / ₄) | 2460-2 ¹ / ₂ 947 (1000-2 ¹ / ₂) | NA |
| LNAV MDA* | 2160-1 | 647 (700-1) | 2160-1 ⁷ / ₈ 647 (700-1 ⁷ / ₈) | NA |
| LNAV MDA | 2580-1 ¹ / ₄ 1067 (1100-1 ¹ / ₄) | 2580-1 ¹ / ₂ 1067 (1100-1 ¹ / ₂) | 2580-3 1067 (1100-3) | NA |
| CIRCLING | 2580-1 ¹ / ₄ 1065 (1100-1 ¹ / ₄) | 2580-1 ¹ / ₂ 1065 (1100-1 ¹ / ₂) | 2800-3 1285 (1300-3) | NA |

SW-3, 13 JUN 2024 to 11 JUL 2024

SW-3, 13 JUN 2024 to 11 JUL 2024