

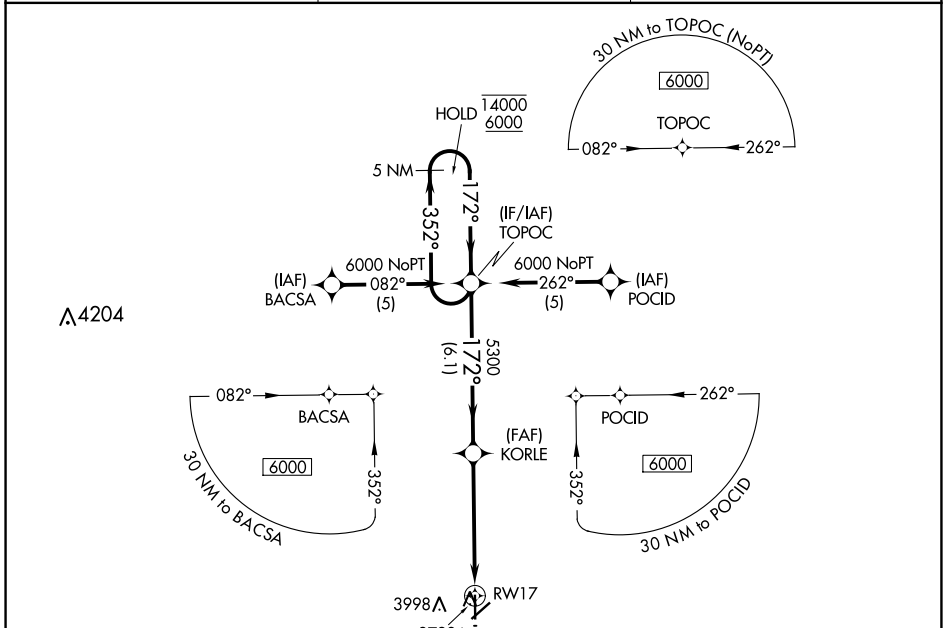
APP CRS 172°	Rwy Idg TDZE Apt Elev	4907 3619 3622
------------------------	-----------------------------	---

RNAV (GPS) RWY 17

ELKHART-MORTON COUNTY (EHA)

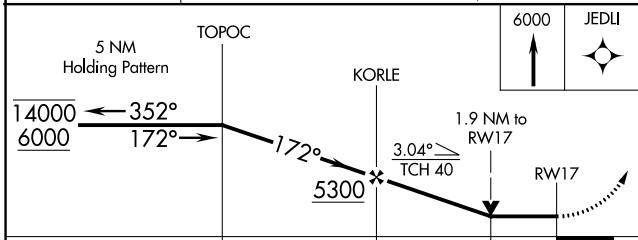
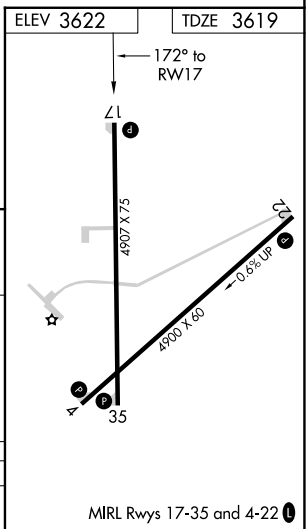
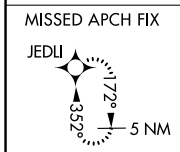
RNP APCH-GPS.	MISSED APPROACH: Climb to 6000 direct JEDLI and hold.
Rwy 17 helicopter visibility reduction below 3/4 SM NA.	

AWOS-3P 118.025	KANSAS CITY CENTER 134.0 257.625	UNICOM 122.8 (CTAF) 0
---------------------------	--	---------------------------------



NC-2, 13 JUN 2024 to 11 JUL 2024

NC-2, 13 JUN 2024 to 11 JUL 2024



CATEGORY	A	B	C	D
LNAV MDA	4240-1	621 (700-1)	4240-1 3/4 621 (700-1 3/4)	NA