

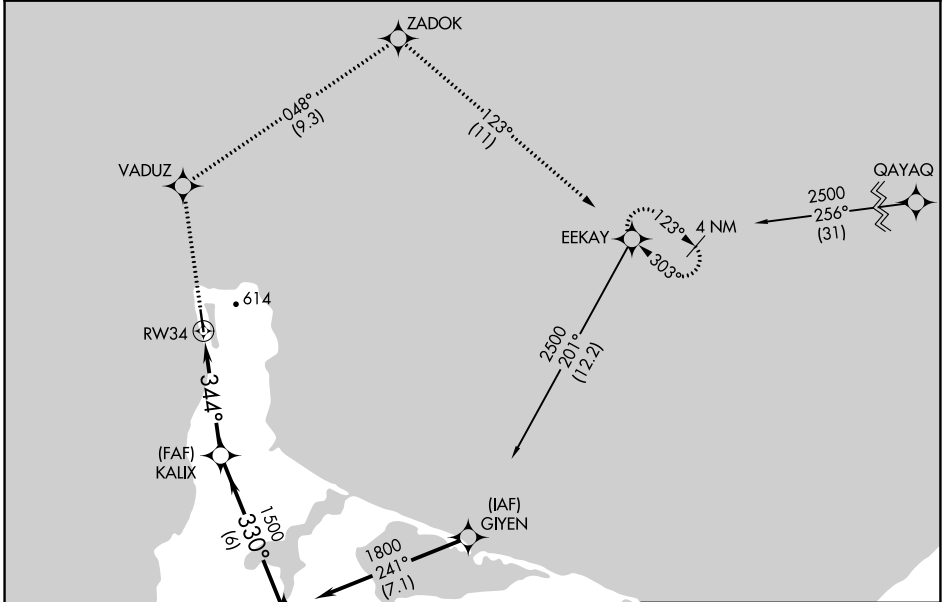
WAAS CH 82135 W34A	APP CRS 344°	Rwy Idg TDZE 29 Apt Elev 30	4500
--	------------------------	---	-------------

RNAV (GPS) RWY 34

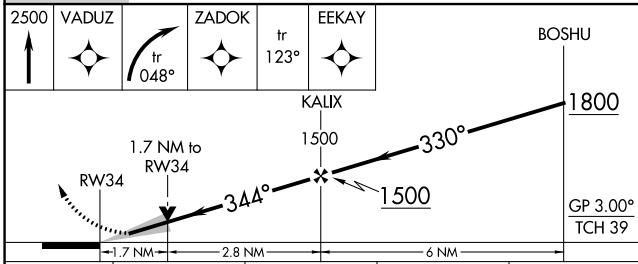
GAMBELL (GAM) (PAGM)

RNP APCH - GPS.	ODALS	MISSED APPROACH: Climb to 2500 direct VADUZ then right turn on track 048° to ZADOK and on track 123° to EEKAY and hold.
<p>▼ Circling NA east of Rwy 16-34. For uncompensated Baro-VNAV systems, LNAV/VNAV NA below -20°C or above 54°C. For inop ALS, increase LNAV/VNAV Cat A and B visibility to 1 1/2 SM. Inop table does not apply to LPV all Cats and LNAV Cats A and B visibilities.</p> <p>⚠ -27°C</p>		

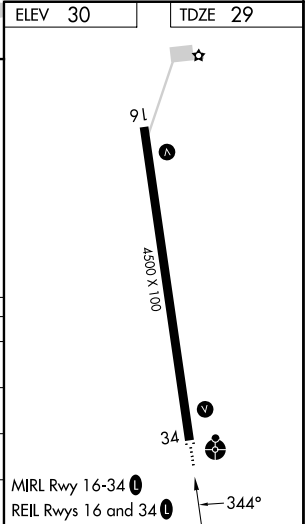
AWOS-3P 125.9	ANCHORAGE CENTER 132.2 281.4	NOME RADIO 122.0	CTAF 122.7 0
-------------------------	--	----------------------------	------------------------



ELEV 30	TDZE 29
---------	---------



CATEGORY	A	B	C	D
LPV DA		229-1	200 (200-1)	
LNAV/VNAV DA		459-1 1/8	430 (500-1 1/8)	
LNAV MDA	600-1	571 (600-1)	600-1 1/2	571 (600-1 1/2)
CIRCLING	600-1	570 (600-1)	600-1 1/8	660-2
			570 (600-1 1/8)	630 (700-2)



AK, 16 MAY 2024 to 11 JUL 2024

AK, 16 MAY 2024 to 11 JUL 2024