

APP CRS	Rwy Idg	3601
173°	TDZE	1798
	Apt Elev	1800

RNAV (GPS) RWY 18

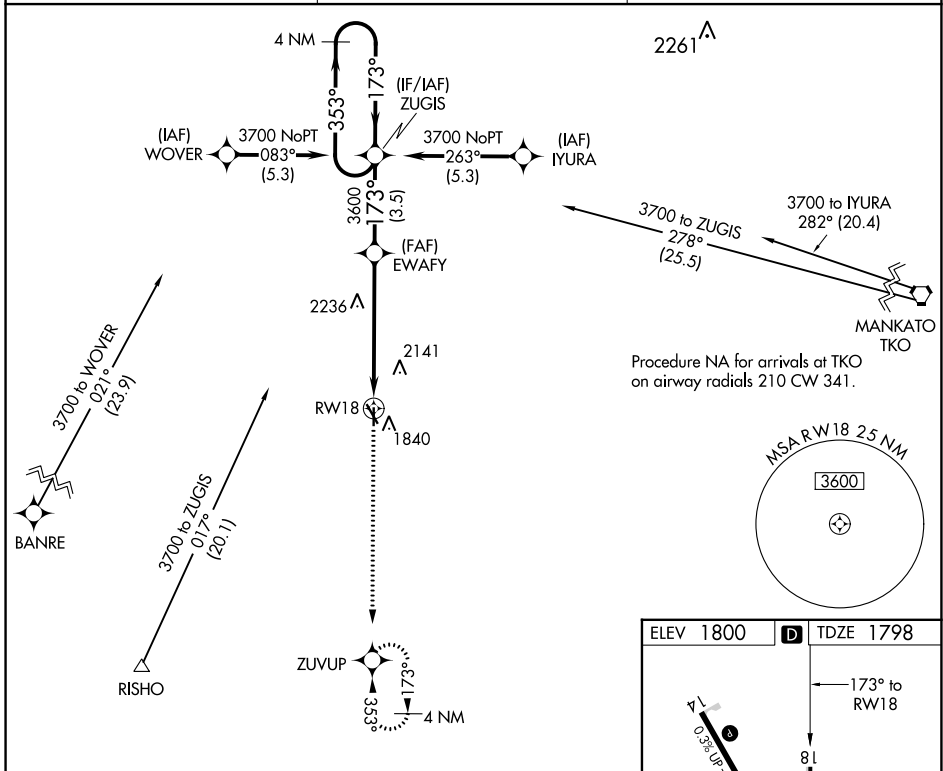
SMITH CENTER MUNI (K82)

RNP APCH.

Circling to Rwy 36 NA at night. Rwy 18 helicopter visibility reduction below 3/4 SM NA. VDP NA when using Concordia altimeter setting. When local altimeter setting not received, use Concordia altimeter setting: increase all MDAs 180 feet and LNAV Cats A/B and Circling Cat A visibility 1/4 SM, and Circling Cat B visibility 1/2 SM.

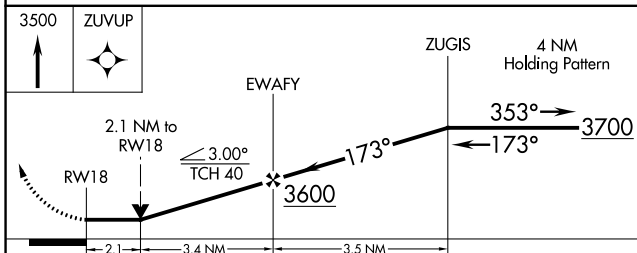
MISSED APPROACH: Climb to 3500 direct ZUVUP and hold.

AWOS-3PT 118.45	MINNEAPOLIS CENTER 119.4 278.8	UNICOM 122.8 (CTAF) 1
---------------------------	--	---------------------------------



NC-2, 13 JUN 2024 to 11 JUL 2024

NC-2, 13 JUN 2024 to 11 JUL 2024



CATEGORY	A	B	C	D
LNAV MDA	2500-1	702 (700-1)	NA	
C CIRCLING	2500-1 700 (700-1)	2580-1 780 (800-1)	NA	

ELEV 1800 **D** TDZE 1798

MRL Rwy 14-32 **1**
REL Rws 14 and 32 **1**