

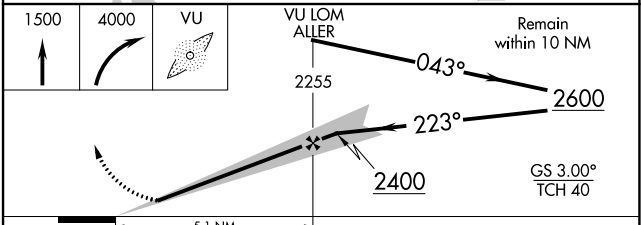
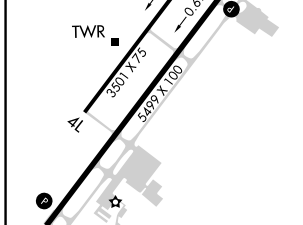
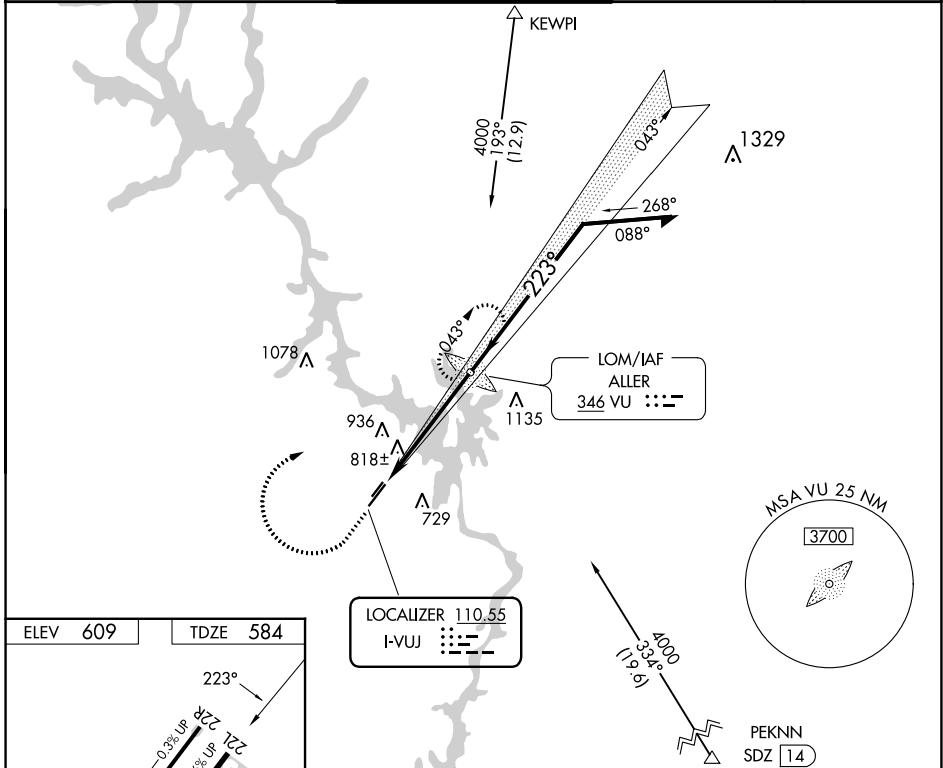
LOC I-VUJ 110.55	APP CRS 223°	Rwy ldg TDZE Apt Elev	5499 584 609
----------------------------	------------------------	-----------------------------	---

ILS or LOC RWY 22L

STANLY COUNTY (VUJ)

ADF required.	MISSED APPROACH: Climb to 1500 then climbing right turn to 4000 direct ALLER LOM and hold, continue climb-in-hold to 4000.
Circling Rwy 4L, 22R NA at night. Rwy 22L helicopter visibility reduction below ¾ SM NA.	

AWOS-3 128.175	CHARLOTTE APP CON 128.325 307.8	STANLY COUNTY TOWER★ 126.275 (CTAF) 0 291.9	GND CON 121.75 254.375	CLNC DEL 121.75 254.375
--------------------------	---	---	----------------------------------	-----------------------------------



REIL Rwy 4R and 22L				
MIRL Rwy 4L-22R				
HIRL Rwy 4R-22L				
FAF to MAP 5.1 NM				
Knots	60	90	120	150
Min:Sec	5:06	3:24	2:33	2:02
CIRCLING	1260-1	651 (700-1)	1100-1	516 (500-1)
S-ILS 22L	916-1		332 (400-1)	
S-LOC 22L	1100-1		1100-1 3/8 516 (500-1 3/8)	
CIRCLING	1260-1		1260-1 3/4 651 (700-1 3/4)	
			1380-2 1/2 771 (800-2 1/2)	

SE-2, 13 JUN 2024 to 11 JUL 2024

SE-2, 13 JUN 2024 to 11 JUL 2024