

KERMIT FOUR DEPARTURE

CHARLOTTE DEP CON
128.325 307.8
AWOS-3
128.175
CLNC DEL
121.75 254.375
GND CON
121.75 254.375
STANLY COUNTY TOWER *
126.275 291.9

RADAR and DME required.

**TOP ALTITUDE:
3000**

PULASKI
116.8 PSK
Chan 115

BARRETS MOUNTAIN
113.75 BZM
Chan 84(Y)

LIBERTY
113.0 LIB
Chan 77

RALEIGH/DURHAM
117.2 RDU
Chan 119

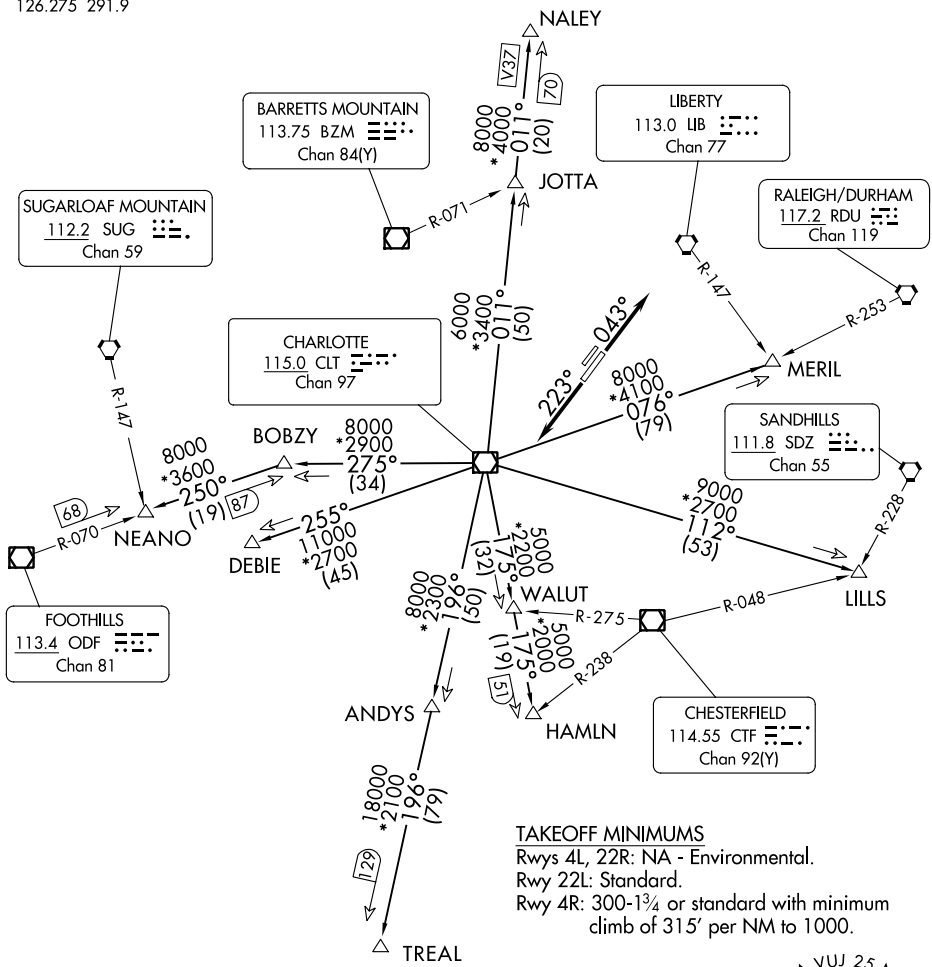
SUGARLOAF MOUNTAIN
112.2 SUG
Chan 59

CHARLOTTE
115.0 CLT
Chan 97

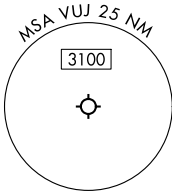
SANDHILLS
111.8 SDZ
Chan 55

FOOTHILLS
113.4 ODF
Chan 81

CHESTERFIELD
114.55 CTF
Chan 92(Y)



TAKEOFF MINIMUMS
Rwys 4L, 22R: NA - Environmental.
Rwy 22L: Standard.
Rwy 4R: 300-1 $\frac{3}{4}$ or standard with minimum climb of 315' per NM to 1000.



NOTE: For turbo jet aircraft only.
NOTE: Upon reaching 10000 MSL, accelerate to and maintain 280K, if unable advise ATC.
NOTE: Transponder code will be issued via Charlotte clearance delivery.

NOTE: Chart not to scale.

(CONTINUED ON FOLLOWING PAGE)

SE-2, 13 JUN 2024 to 11 JUL 2024

SE-2, 13 JUN 2024 to 11 JUL 2024