

LOC/DME I-RIL <b>110.9</b> Chan <b>46</b>	APP CRS <b>258°</b>	Rwy ldg TDZE Apt Elev <b>5537</b>	<b>N/A</b> <b>N/A</b> <b>5537</b>
---	------------------------	--	---

# LOC-A

RIFLE GARFIELD COUNTY (RIL)

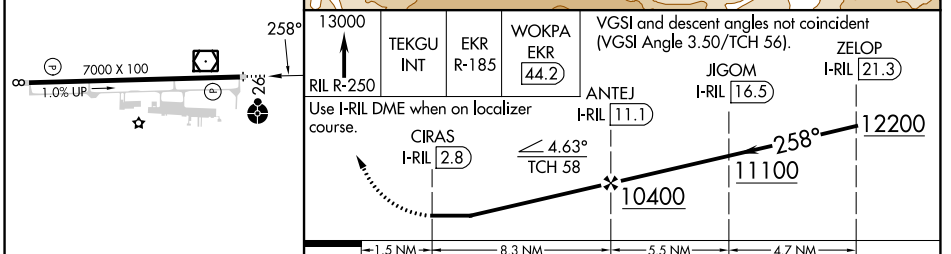
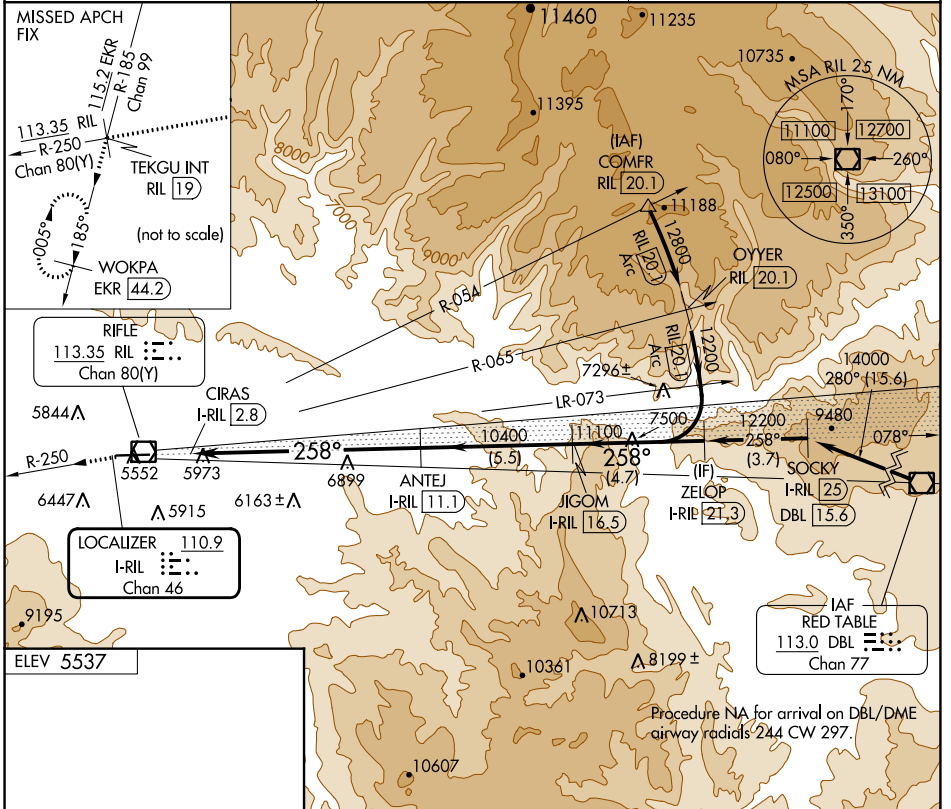
DME required.

**⚠** Circling NA south of Rwy 8-26 at night. Rwy 26 helicopter visibility reduction below  $\frac{3}{4}$  SM NA.

**❄** -14°C

MISSED APPROACH: Climb to 13000 on RIL VOR/DME R-250 to TEKGU INT/RIL 19 DME and on EKR VOR/DME R-185 to WOKPA/EKR 44.2 DME and hold.

ASOS <b>135.275</b>	DENVER CENTER <b>134.95 327.075</b>	UNICOM <b>122.8 (CTAF) 0</b>
------------------------	--	---------------------------------



CATEGORY	A	B	C	D
<b>C</b> CIRCLING	7920-1 $\frac{3}{4}$	2383 (2400-1 $\frac{3}{4}$ )	7920-3 2383 (2400-3)	NA

SW-1, 13 JUN 2024 to 11 JUL 2024

SW-1, 13 JUN 2024 to 11 JUL 2024