

CALDWELL, TEXAS

AL-6743 (FAA)

23278

VORTAC CLL 113.3 Chan 80	APP CRS 243°	Rwy Idg TDZE Apt Elev	N/A N/A 391
--	------------------------	-----------------------------	--

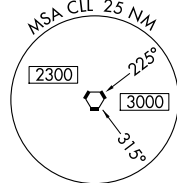
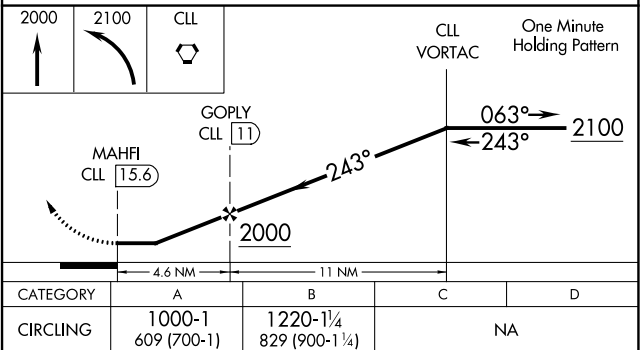
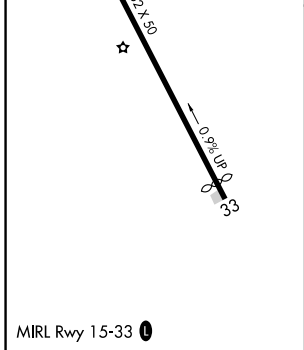
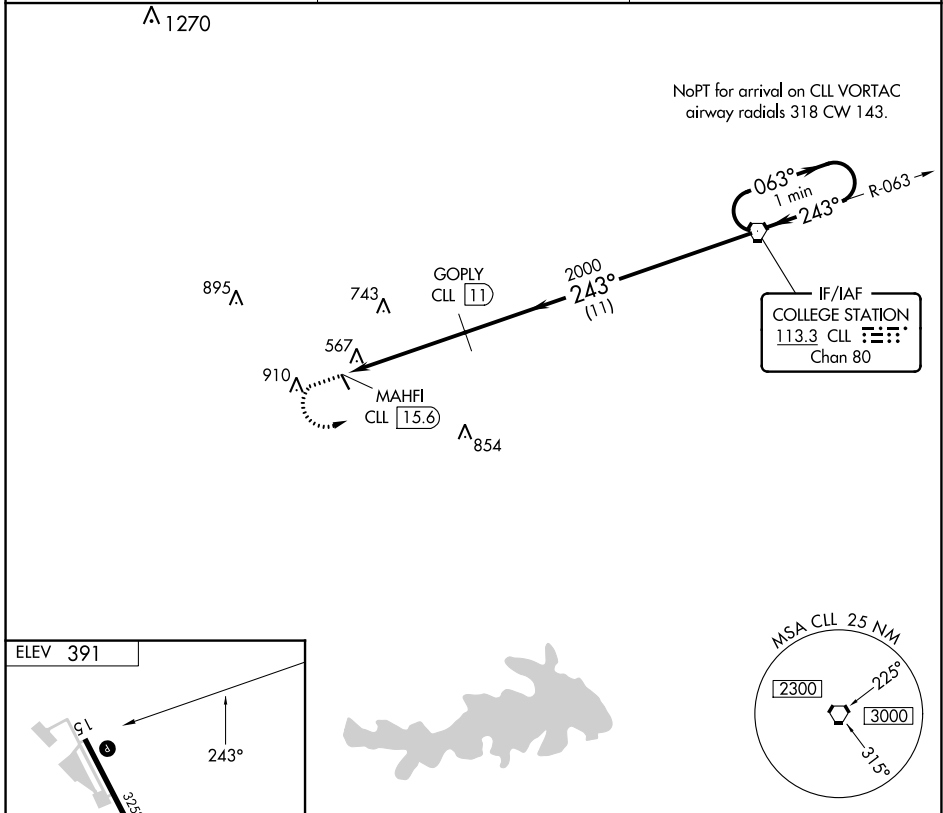
VOR/DME-A

CALDWELL MUNI (R/WV)

⚠ When local altimeter setting not received, use College Station altimeter setting and increase MDA 60 feet. Circling NA east of Rwy 15-33. Procedure NA at night.

MISSSED APPROACH: Climb to 2000 then climbing left turn to 2100 direct CLL VORTAC and hold.

AWOS-3PT 118.35	HOUSTON APP CON 134.3 360.85	CTAF 122.9
---------------------------	--	----------------------



SC-5, 13 JUN 2024 to 11 JUL 2024

SC-5, 13 JUN 2024 to 11 JUL 2024

CALDWELL, TEXAS
Amdt 3A 30DEC21

30°31'N-96°42'W

CALDWELL MUNI (R/WV)
VOR/DME-A