

BAY VISUAL RWY 6

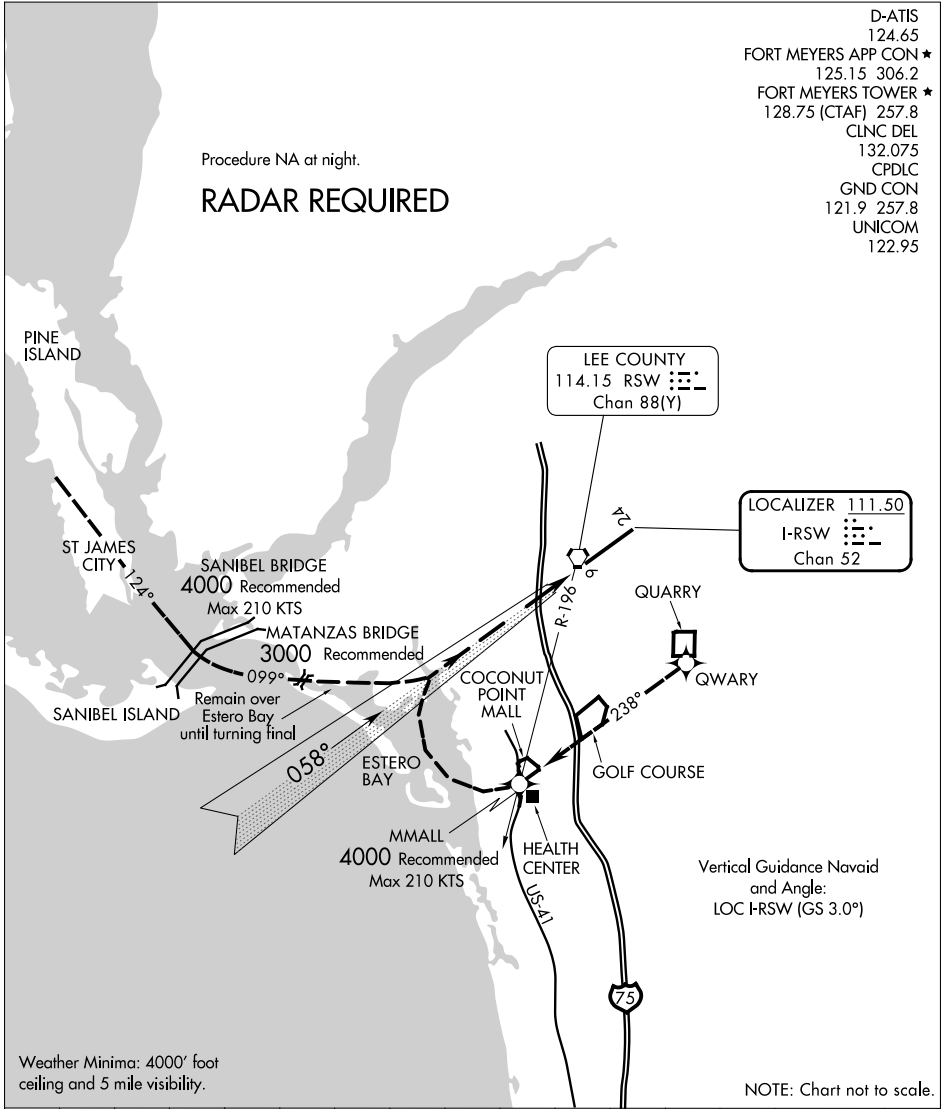
SOUTHWEST FLORIDA INTL (RSW)
FORT MYERS, FLORIDA

- D-ATIS 124.65
- FORT MYERS APP CON ★ 125.15 306.2
- FORT MYERS TOWER ★ 128.75 (CTAF) 257.8
- CLNC DEL 132.075
- CPDLC
- GND CON 121.9 257.8
- UNICOM 122.95

Procedure NA at night.

RADAR REQUIRED

SE-3, 13 JUN 2024 to 11 JUL 2024



LOCALIZER 111.50
I-RSW
Chan 52

LEE COUNTY
114.15 RSW
Chan 88(Y)

Vertical Guidance Navaid
and Angle:
LOC I-RSW (GS 3.0°)

SE-3, 13 JUN 2024 to 11 JUL 2024

1 NM	2	3	4	5	6	7	8	9	10	11	12	13	14	15	16
------	---	---	---	---	---	---	---	---	----	----	----	----	----	----	----

BAY VISUAL APPROACH RUNWAY 6

From EAST proceed direct to the quarry (over the Rock Quarry Midfield right downwind runway six) then direct and abeam the Coconut Point Mall. Turn base over Estero Bay and remain over the bay until turning final.

From WEST proceed direct to Pine Island then direct to the Sanibel Bridge (heading 124°) then direct to the Matanzas Pass Bridge (heading 099°). Remain over the middle of Estero Bay until turning final.

BAY VISUAL RWY 6

26°32'N-81°45'W

FORT MYERS, FLORIDA
SOUTHWEST FLORIDA INTL (RSW)

Amdt 1 21AUG14