

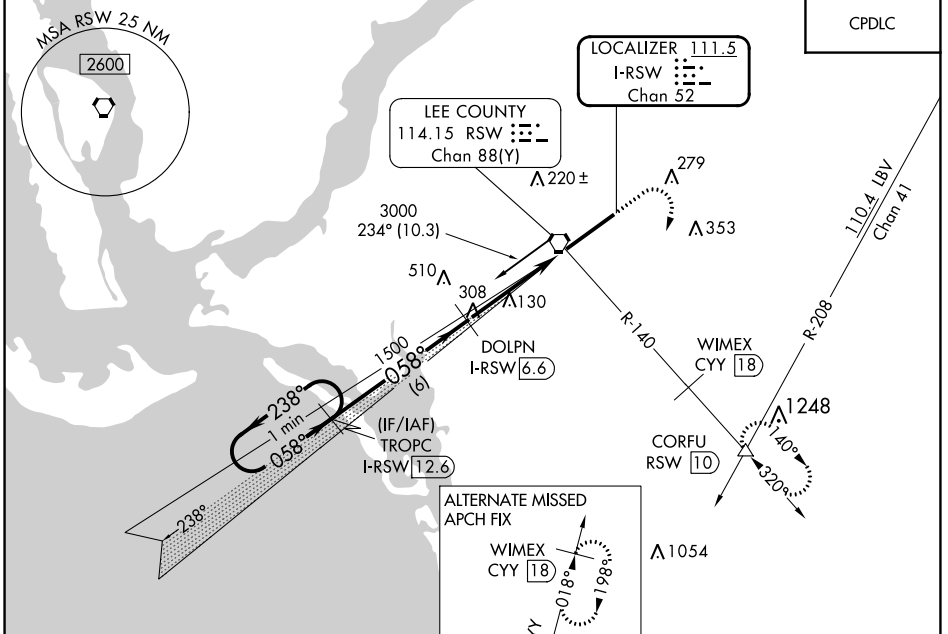
LOC/DME I-RSW <b>111.5</b> Chan <b>52</b>	APP CRS <b>058°</b>	Rwy Idg <b>12000</b> TDZE <b>27</b> Apt Elev <b>30</b>
---	------------------------	--

# ILS or LOC/DME RWY 6

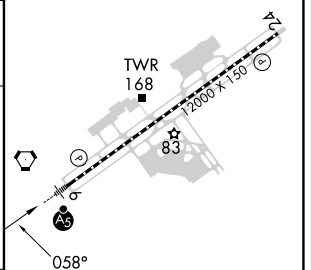
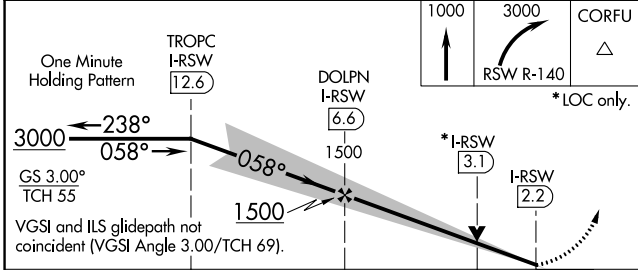
SOUTHWEST FLORIDA INTL (RSW)

<p>For inop MALSRL, increase S-ILS 6 Cat E visibility to RVR 4000 and S-LOC 6 Cat E visibility to RVR 6000.</p>	<p>MALSRL</p>	<p>MISSED APPROACH: Climb to 1000 then climbing right turn to 3000 on RSW VORTAC R-140 to CORFU INT/RSW 10 DME and hold.</p>

D-ATIS <b>124.65</b>	FORT MYERS APP CON ★ <b>125.15 306.2</b> (RWY 6) <b>126.8 306.2</b> (RWY 24)	FORT MYERS TOWER ★ <b>128.75</b> (CTAF) <b>0 257.8</b>	GND CON <b>121.9 257.8</b>	CLNC DEL <b>132.075</b>	UNICOM <b>122.95</b>
-------------------------	--	---	-------------------------------	----------------------------	-------------------------



ELEV 30	TDZE 27
---------	---------



CATEGORY	A	B	C	D	E
S-ILS 6	227/18 200 (200-½)				
S-LOC 6	380/24 353 (400-½)		380/30 353 (400-¾)		
CIRCLING	500-1	470 (500-1)	580-1½ 550 (600-1½)	660-2 630 (700-2)	820-2¾ 790 (800-2¾)

REIL Rwy 24  
TDZ/CL Rwy 6  
HIRL Rwy 6-24

SE-3, 13 JUN 2024 to 11 JUL 2024

SE-3, 13 JUN 2024 to 11 JUL 2024