

WAAS CH 70319 W24A	APP CRS 238°	Rwy Idg 12000 TDZE 30 Apt Elev 30
--	------------------------	--

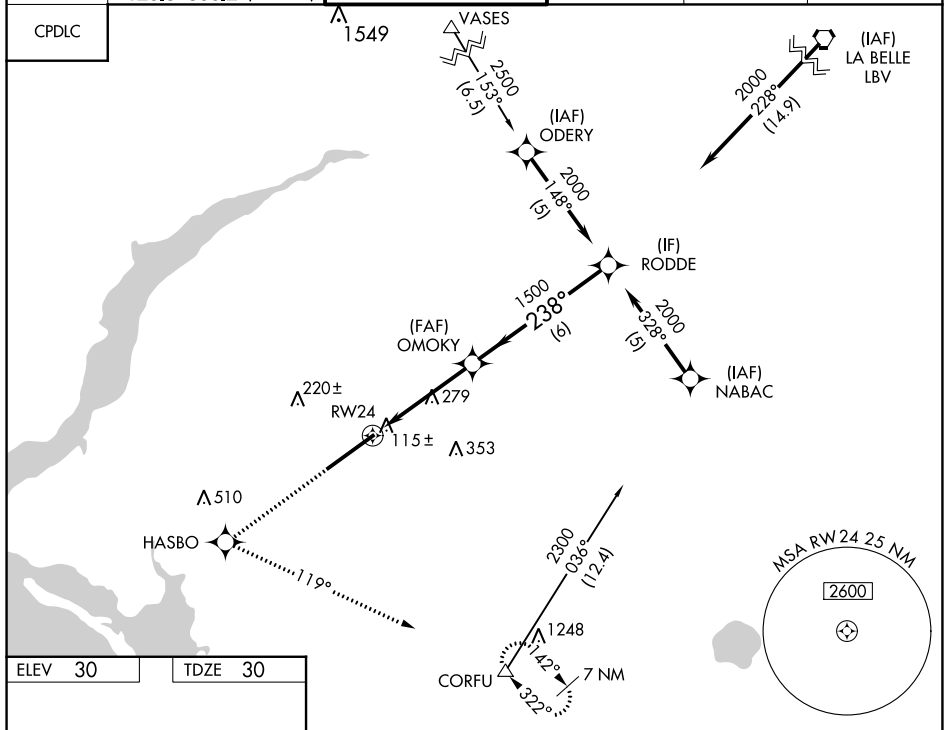
RNAV (GPS) RWY 24

SOUTHWEST FLORIDA INTL (RSW)

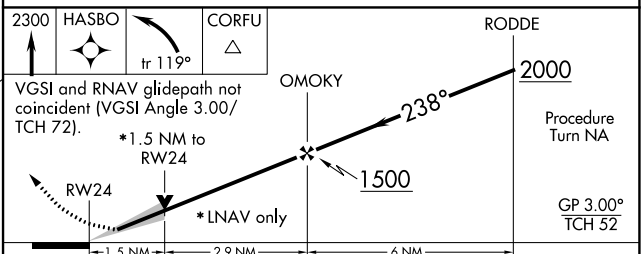
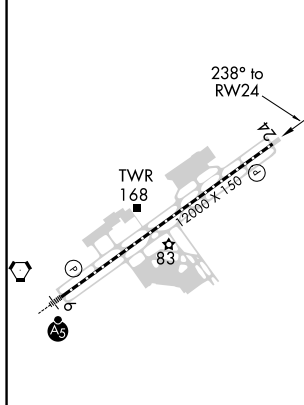
▽ For uncompensated Baro-VNAV systems, LNAV/VNAV NA below -15°C (5°F) or above 48°C (118°F).
DME/DME RNP-0.3 NA.

MISSED APPROACH: Climb to 2300 direct HASBO and left turn via 119° track to CORFU and hold.

D-ATIS 124.65	FORT MYERS APP CON ★ 125.15 306.2 (RWY 6) 126.8 306.2 (RWY 24)	FORT MYERS TOWER ★ 128.75 (CTAF) 0 257.8	GND CON 121.9 257.8	CLNC DEL 132.075	UNICOM 122.95
-------------------------	--	---	-------------------------------	----------------------------	-------------------------



ELEV 30	TDZE 30
---------	---------



CATEGORY	A	B	C	D
LPV DA		280-3/4	250 (300-3/4)	
LNAV/VNAV DA		420-1/4	390 (400-1/4)	
LNAV MDA	580-1	550 (600-1)	580-1/2 550 (600-1/2)	580-1/4 550 (600-1/4)
CIRCLING	580-1	550 (600-1)	580-1/2 550 (600-1/2)	660-2 630 (700-2)

REIL Rwy 24
TDZ/CL Rwy 6
HIRL Rwy 6-24

SE-3, 13 JUN 2024 to 11 JUL 2024

SE-3, 13 JUN 2024 to 11 JUL 2024