

| | | |
|--|------------------------|---|
| WAAS CH 93731 W31A | APP CRS 319° | Rwy Idg 4399 TDZE 1943 Apt Elev 1944 |
|--|------------------------|---|

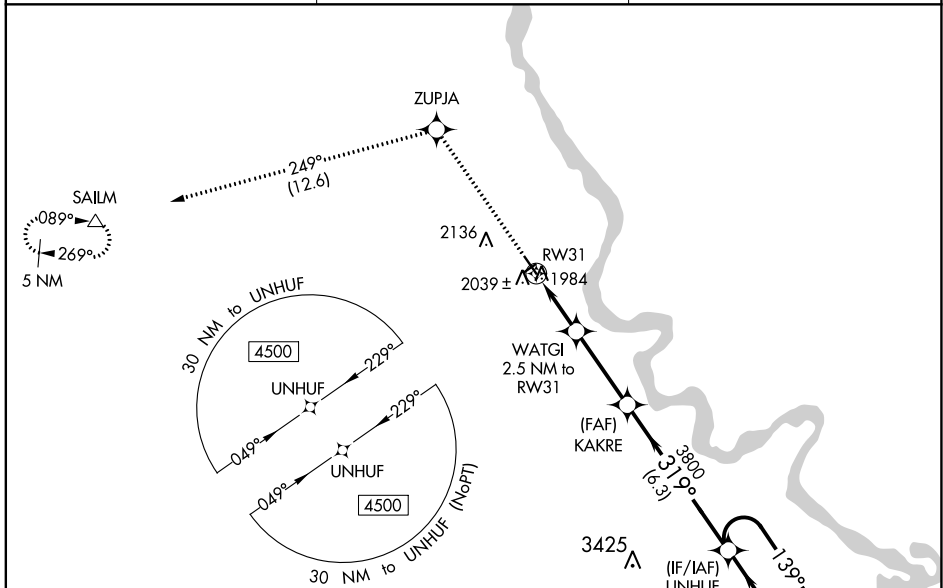
RNAV (GPS) RWY 31

MANDAN RGNL/LAWLER FLD (Y19)

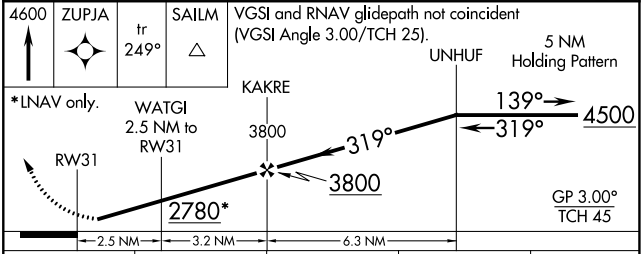
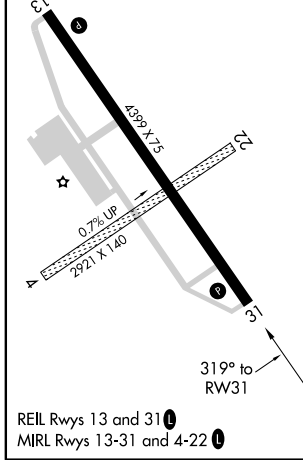
ASR Baro-VNAV NA when using Bismarck altimeter setting. For uncompensated Baro-VNAV systems, LNAV/VNAV NA below -18°C (0°F) or above 54°C (130°F). DME/DME RNP-0.3 NA. When local altimeter setting not received, use Bismarck altimeter setting and increase all DA 54 feet and LNAV/VNAV all Cats visibility 1/8 mile, increase all MDA 60 feet and LNAV Cat C/D visibility 1/8 mile and Circling Cat D 1/4 mile. Helicopter visibility reduction below 3/4 SM NA. Circling to Rwys 4 and 22 NA.

MISSED APPROACH: Climb to 4600 direct ZUPJA and on track 249° to SAILM and hold.

| | | |
|--------------------------|--|---------------------------------|
| AWOS-3 118.225 | BISMARCK APP CON * 126.3 298.9 | UNICOM 122.8 (CTAF) 0 |
|--------------------------|--|---------------------------------|



| | |
|-----------|------------|
| ELEV 1944 | TDZE 1943 |
| | 2059± ▲ |



| CATEGORY | A | B | C | D |
|-------------------|-----------------------|-----------------------|-------------------------|-----------------------|
| LPV DA | | 2193-1 | 250 (300-1) | |
| LNAV/VNAV DA | | 2220-1 | 277 (300-1) | |
| LNAV MDA | | 2300-1 | 357 (400-1) | |
| C CIRCLING | 2360-1 416 (500-1) | 2460-1 516 (600-1) | 2460-1½ 516 (600-1½) | 2560-2 616 (700-2) |