

APP CRS <b>230°</b>	Rwy Idg <b>4400</b>
	TDZE <b>58</b>
	Apt Elev <b>59</b>

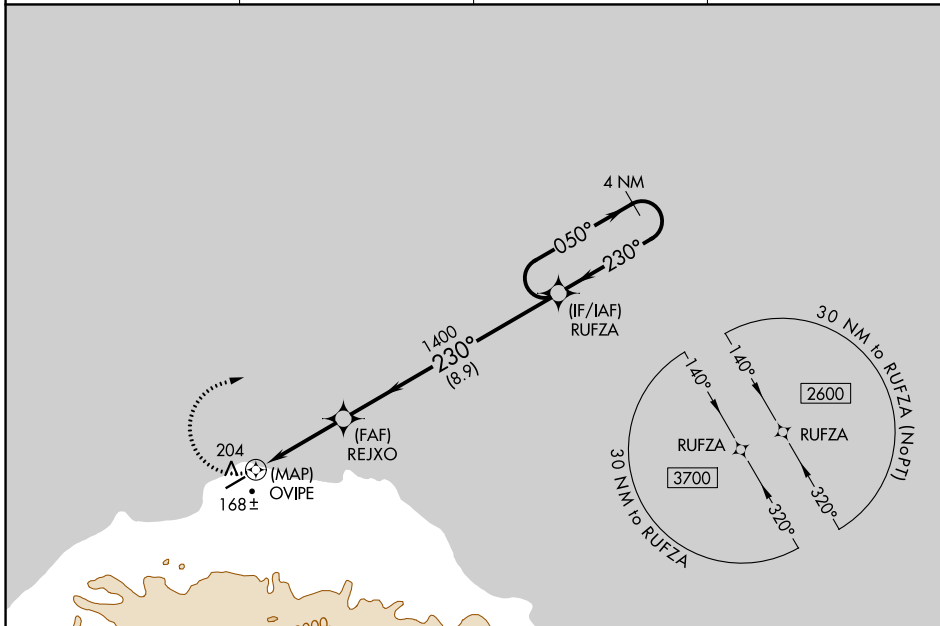
# RNAV (GPS) RWY 23

SAVOONGA (SVA) (PASA)

**⚠** DME/DME RNP-0.3 NA. When local altimeter setting not received, use Gambell altimeter setting and increase all MDAs 100 feet; increase LNAV Cat C/D visibility ¼ SM and Circling Cat C visibility ½ SM. Circling NA southeast of Rwy 5-23. VDP NA with Gambell altimeter setting.

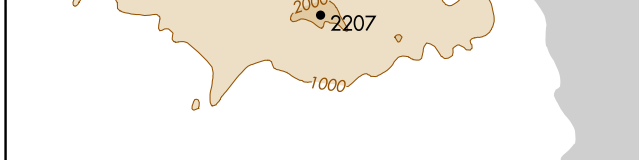
**⚠** MISSED APPROACH: Climbing right turn to 2600 direct RUFZA and hold.

AWOS-3P <b>121.3</b>	ANCHORAGE CENTER <b>132.2 281.4</b>	NOME RADIO <b>122.3</b>	CTAF <b>122.7</b> <b>⓪</b>
-------------------------	--	----------------------------	-------------------------------

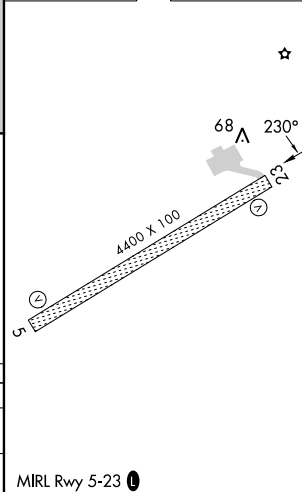
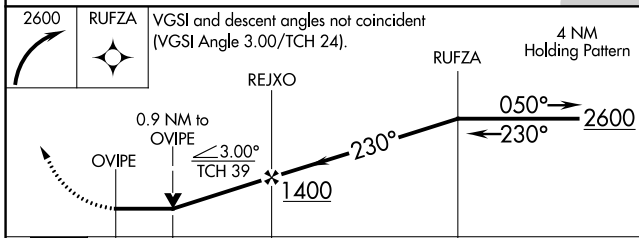


AK, 16 MAY 2024 to 11 JUL 2024

AK, 16 MAY 2024 to 11 JUL 2024



ELEV 59	TDZE 58
---------	---------



CATEGORY	A	B	C	D
LNAV MDA	520-1 462 (500-1)		520-1⅓ 462 (500-1⅓)	
CIRCLING	520-1 461 (500-1)		780-2 721 (800-2)	1160-3 1101 (1200-3)

MIRL Rwy 5-23 **⓪**