

APP CRS	Rwy Idg	<b>4400</b>
<b>069°</b>	TDZE	<b>59</b>
	Apt Elev	<b>59</b>

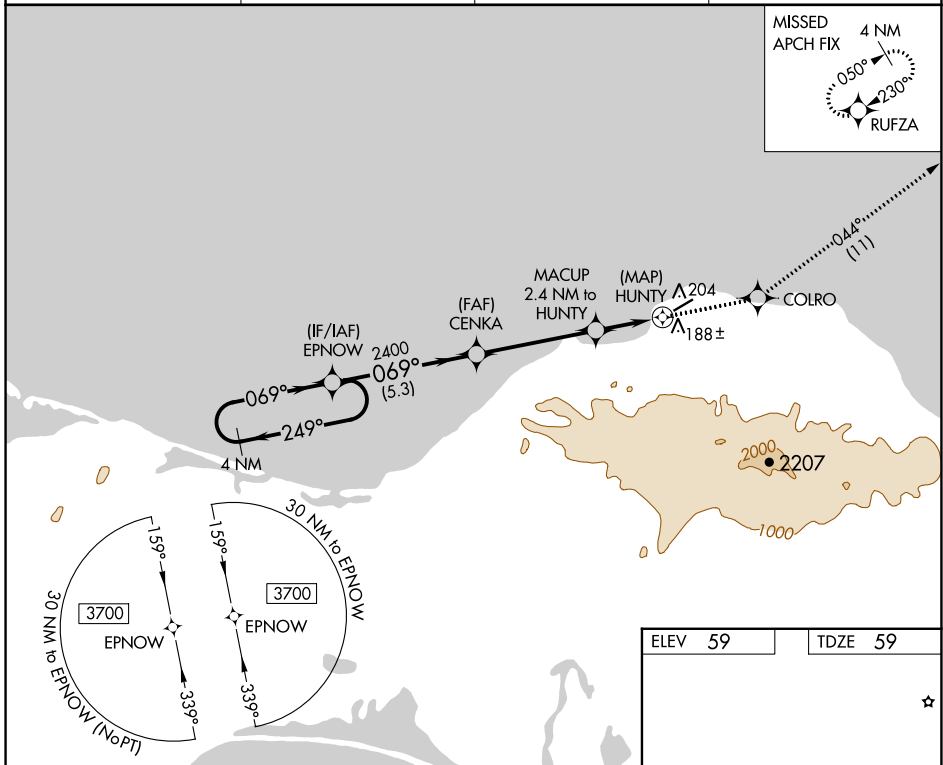
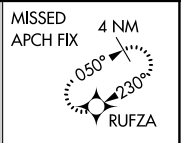
# RNAV (GPS) RWY 5

SAVOONGA (SVA) (PASA)

**⚠** Circling NA southeast of Rwy 5-23. DME/DME RNP-0.3 NA. When local altimeter setting not received, use Gambell altimeter setting and increase all MDAs 100 feet; increase LNAV Cat C/D visibility  $\frac{3}{8}$  SM and Circling Cat C visibility  $\frac{1}{2}$  SM. VDP NA with Gambell altimeter setting.

**MISSED APPROACH:** Climb to 3700 direct COLRO and on track 044° to RUFZA and hold, continue climb-in-hold to 3700.

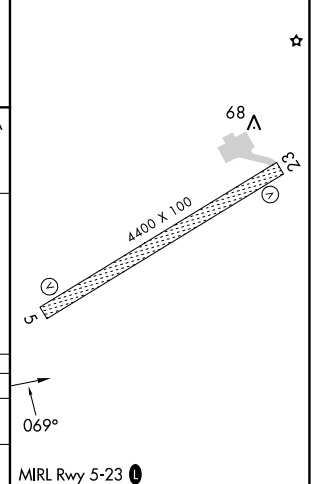
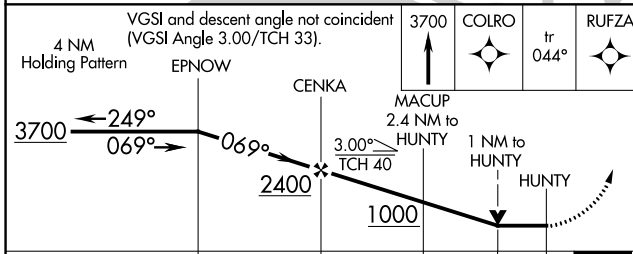
AWOS-3P <b>121.3</b>	ANCHORAGE CENTER <b>132.2 281.4</b>	NOME RADIO <b>122.3</b>	CTAF <b>122.7</b> <b>0</b>
-------------------------	--	----------------------------	-------------------------------



AK, 16 MAY 2024 to 11 JUL 2024

AK, 16 MAY 2024 to 11 JUL 2024

ELEV 59	TDZE 59
---------	---------



CATEGORY	A	B	C	D
LNAV MDA	560-1 501 (600-1)		560-1 $\frac{3}{8}$ 501 (600-1 $\frac{3}{8}$ )	
CIRCLING	560-1 501 (600-1)		780-2 721 (800-2)	1160-3 1101 (1200-3)