

VOR/DME ULL 117.3 Chan 120	APP CRS 229°	Rwy Idg 4400 TDZE 58 Apt Elev 59
------------------------------------------------	------------------------	-------------------------------------------------------------

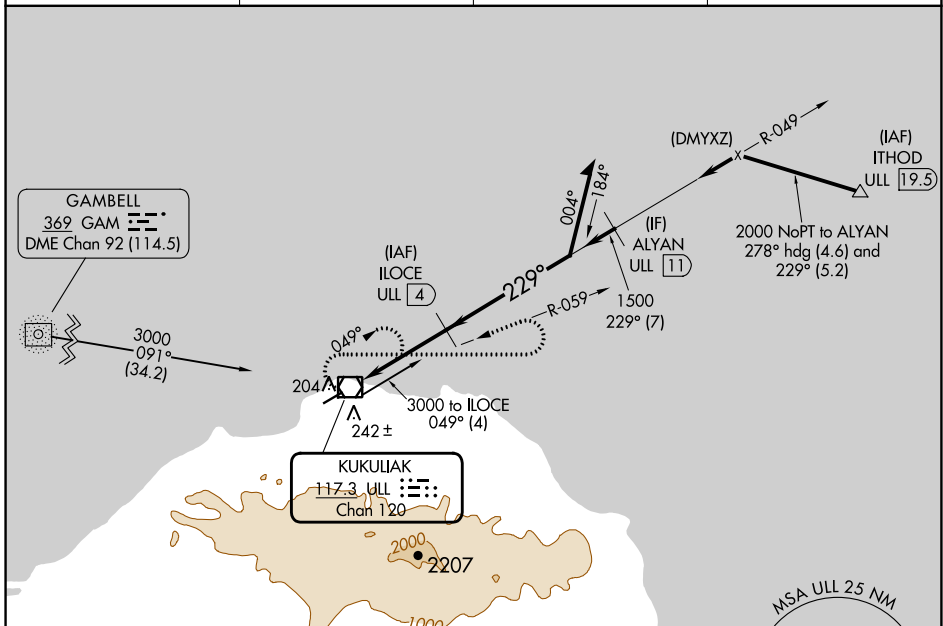
VOR/DME RWY 23

SAVOONGA (SVA) (PASA)

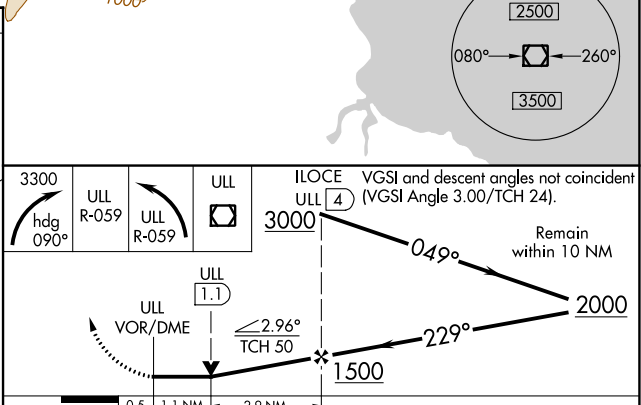
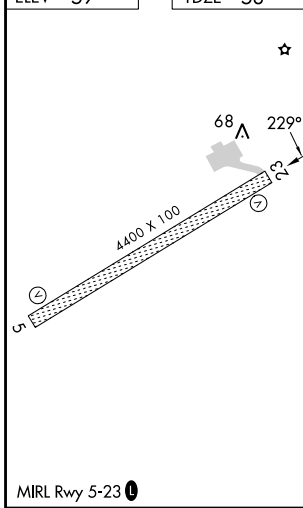
⚠ Circling NA southeast of Rwy 5-23. When local altimeter setting not received, use Gambell altimeter setting and increase all MDAs 100 feet; increase S-23 Cat C/D visibility ¼ SM and Circling Cat C visibility ½ SM. VDP NA with Gambell altimeter setting.

MISSED APPROACH: Climbing right turn to 3300 via heading 090° and via ULL VOR/DME R-059 then left turn via ULL VOR/DME R-059 to ULL VOR/DME and hold.

AWOS-3P 121.3	ANCHORAGE CENTER 132.2 281.4	NOME RADIO 122.3	CTAF 122.7
-------------------------	----------------------------------------	----------------------------	----------------------



ELEV 59	TDZE 58
---------	---------



CATEGORY	A	B	C	D
S-23	600-1 542 (600-1)	600-1½ 542 (600-1½)	600-1¾ 542 (600-1¾)	600-1¾ 542 (600-1¾)
CIRCLING	600-1 541 (600-1)	780-2 721 (800-2)	1160-3 1101 (1200-3)	

AK, 16 MAY 2024 to 11 JUL 2024

AK, 16 MAY 2024 to 11 JUL 2024