

LOC/DME I-JVW <b>108.55</b> Chan 22(Y)	APP CRS <b>124°</b>	Rwy Idg <b>5499</b> TDZE <b>241</b> Apt Elev <b>247</b>
--	------------------------	---

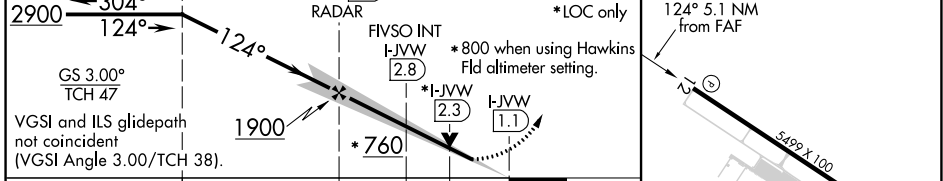
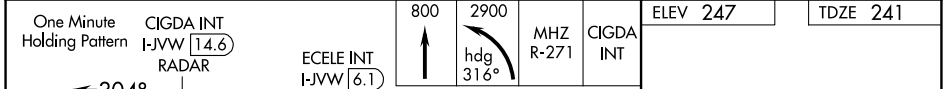
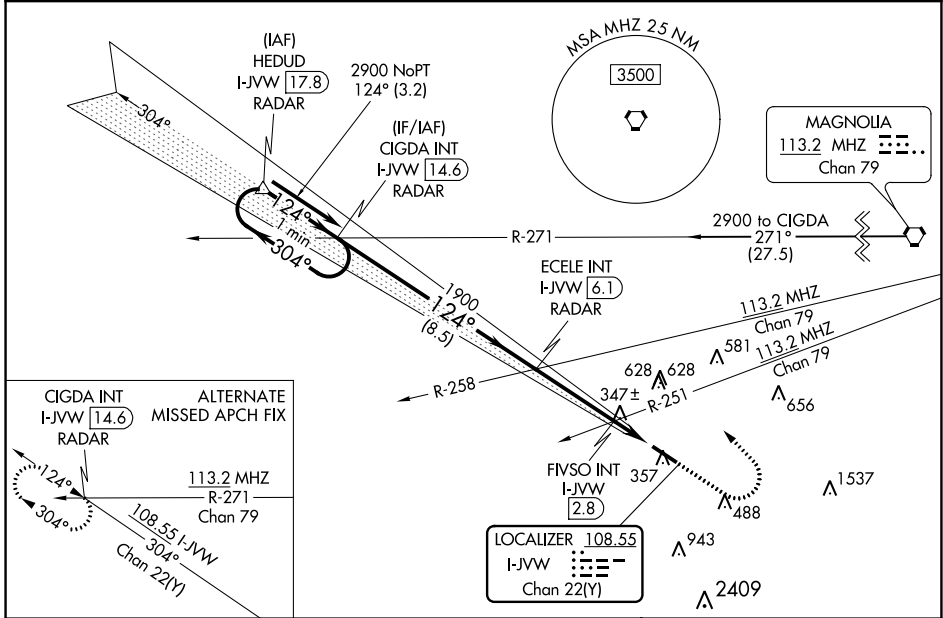
# ILS or LOC RWY 12

JOHN BELL WILLIAMS (JVW)

**⚠** VDP NA with Hawkins Fld altimeter setting. Circling NA for Cat D southwest of Rwy 12-30.  
**⚠** When local altimeter setting not received, use Hawkins Fld altimeter setting: increase all DA 36 feet, all MDA 40 feet, S-LOC 12 Cat C and D visibilities ¼ mile, and Circling Cat C and D visibilities ¼ mile, increase FIVSO fix minimums S-LOC 12 Cat C and D visibilities ¼ mile and Circling Cat C and D visibilities ¼ mile.

MISSED APPROACH: Climb to 800 then climbing left turn to 2900 on heading 316° and on 2900 MHz VORTAC R-271 to CIGDA INT/I-JVW 14.6 DME and hold.

AWOS-3PT <b>118.675</b>	JACKSON APP CON ★ <b>125.25 319.2</b>	UNICOM <b>123.0 (CTAF)</b>
----------------------------	--	-------------------------------



CATEGORY	A	B	C	D
S-ILS 12	441- <sup>3</sup> / <sub>4</sub> 200 (200- <sup>3</sup> / <sub>4</sub> )			
S-LOC 12	760-1	519 (600-1)	760- <sup>1</sup> / <sub>8</sub>	519 (600- <sup>1</sup> / <sub>8</sub> )
<b>C</b> CIRCLING	800-1	553 (600-1)	733 (800-2)	733 (800-2 ¼)
FIVSO FIX MINIMUMS (DUAL VOR RECEIVERS OR DME REQUIRED)				
S-LOC 12	660-1	419 (500-1)	660- <sup>1</sup> / <sub>8</sub>	419 (500- <sup>1</sup> / <sub>8</sub> )
<b>C</b> CIRCLING	800-1	553 (600-1)	980-2	980-2 ¼
			733 (800-2)	733 (800-2 ¼)

MIRL Rwy 12-30 **Ⓛ**  
 REIL Rwy 12 and 30 **Ⓛ**

FAF to MAP 5.1 NM

Knots	60	90	120	150	180
Min:Sec	5:06	3:24	2:33	2:02	1:42

SC-4, 13 JUN 2024 to 11 JUL 2024

SC-4, 13 JUN 2024 to 11 JUL 2024