

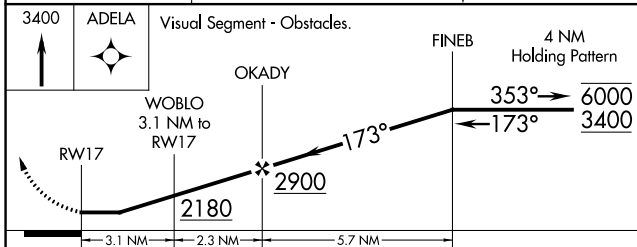
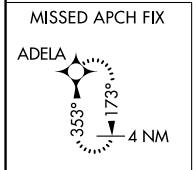
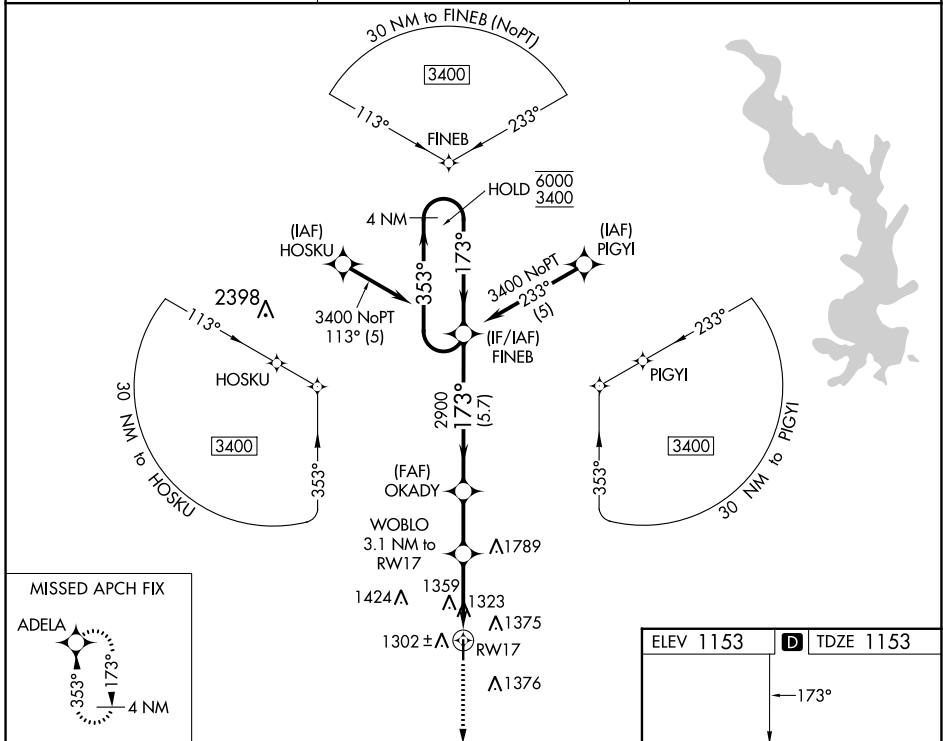
WAAS CH 63234 W17A	APP CRS 173°	Rwy Idg 4100 TDZE 1153 Apt Elev 1153
--	------------------------	---

RNAV (GPS) RWY 17

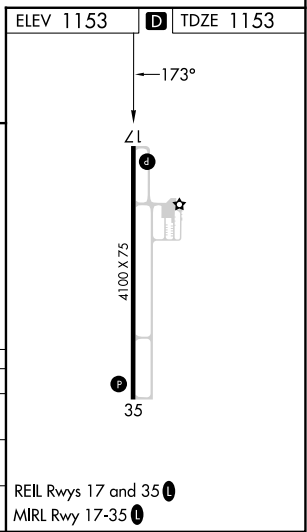
ABILENE MUNI (K78)

RNP APCH - GPS.	MISSED APPROACH: Climb to 3400 direct ADELA and hold.
<p>⚠ Rwy 17 helicopter visibility reduction below 1 SM NA. Straight-in Rwy 17 NA at night, Circling Rwy 17 NA at night. When local altimeter setting not received, use Salina altimeter setting and increase Circling Cat A and B MDA 80 feet.</p>	

AWOS-2 124.125	MARSHALL GCA* 121.25 254.35	UNICOM 122.8 (CTAF)
--------------------------	---------------------------------------	-------------------------------



CATEGORY	A	B	C	D
LP MDA	1640-1	487 (500-1)	1640-1 $\frac{3}{8}$ 487 (500-1 $\frac{3}{8}$)	NA
LNAV MDA	1680-1	527 (600-1)	1680-1 $\frac{1}{2}$ 527 (600-1 $\frac{1}{2}$)	NA
C CIRCLING	1740-1	587 (600-1)	1980-2 $\frac{1}{2}$ 827 (900-2 $\frac{1}{2}$)	NA



NC-2, 13 JUN 2024 to 11 JUL 2024

NC-2, 13 JUN 2024 to 11 JUL 2024