

LOC/DME I-JUH <b>109.35</b> Chan <b>30(Y)</b>	APP CRS <b>276°</b>	Rwy Idg TDZE Apt Elev	<b>5002</b> <b>3142</b> <b>3178</b>
---	------------------------	-----------------------------	---

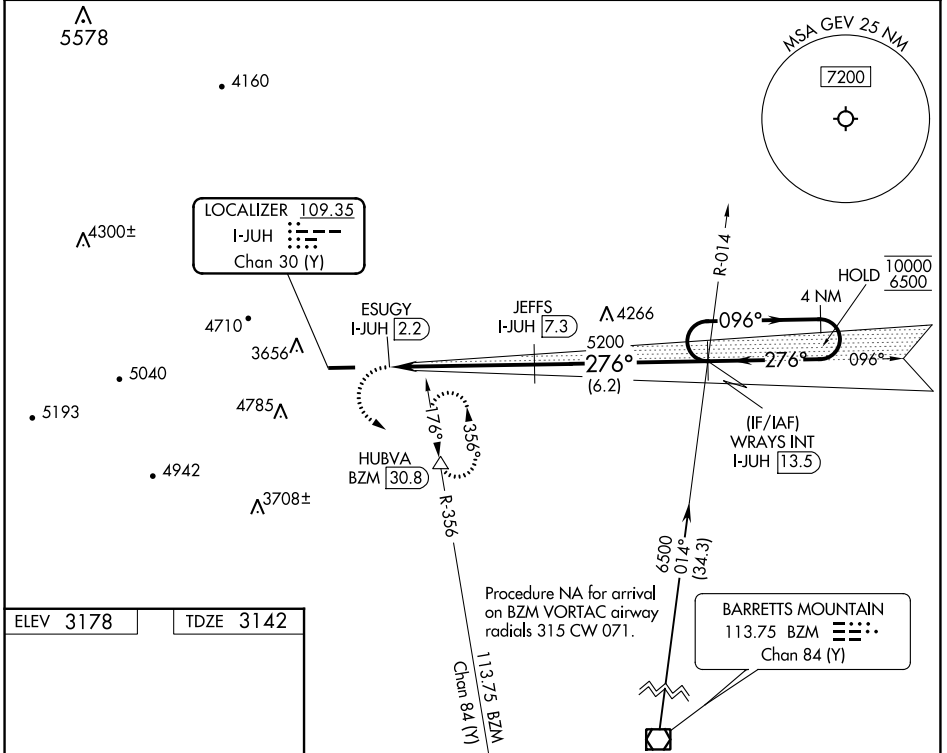
**LOC RWY 28**  
ASHE COUNTY (GEV)

DME required.

▼ Circling to Rwy 10 NA at night.

▲ MISSED APPROACH: Climbing left turn to 7200 on heading 096° and on BZM VOR/DME R-356 to HUBVA/BZM 30.8 DME and hold, continue climb-in-hold to 7200.

AWOS-3 <b>120.675</b>	ATLANTA CENTER <b>125.15 263.0</b>	UNICOM <b>122.8 (CTAF) 0</b>
--------------------------	---------------------------------------	---------------------------------



ELEV 3178 TDZE 3142

REIL Rwy 28 0

MIRL Rwy 10-28 0

5002 X 75

1.8% UP

276°

7200	BZM R-356	HUBVA	4 NM Holding Pattern	
hdg 096°			WRAYS INT I-JUH [13.5]	
10000	ESUGY I-JUH [2.2]	JEFFS I-JUH [7.3]	5200	10000
6500			276°	6500
1.3	1.3 NM	3.9 NM	6.2 NM	
3.00°	TCH 48			
CATEGORY	A	B	C	D
S-LOC 28	3980-1½	838 (900-1½)	3980-2½	838 (900-2½)
CIRCLING	4280-1½	1102 (1200-1½)	5140-3 1962 (2000-3)	5180-3 2002 (2100-3)

SE-2, 13 JUN 2024 to 11 JUL 2024

SE-2, 13 JUN 2024 to 11 JUL 2024