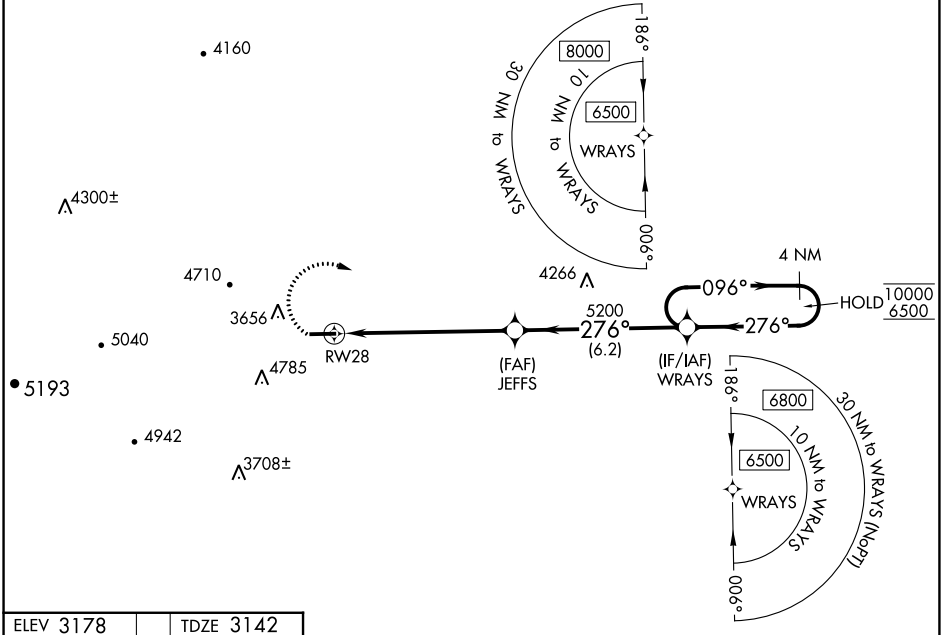


WAAS CH 70437 W28A	APP CRS 276°	Rwy Idg TDZE Apt Elev	5002 3142 3178
--	------------------------	-----------------------------	---

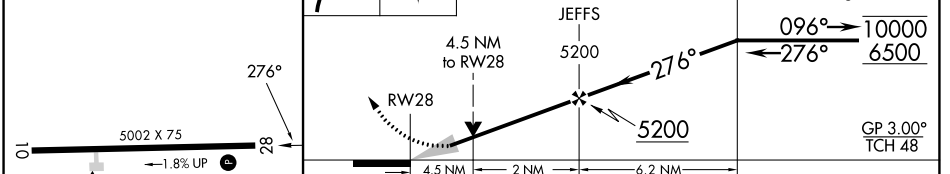
RNAV (GPS) RWY 28

ASHE COUNTY (GEV)

RNP APCH - GPS.		MISSED APPROACH: Climbing right turn to 6500 direct WRAYS and hold, continue climb-in-hold to 6500. *Missed approach requires minimum climb of 350 feet per NM to 5700.
AWOS-3 120.675	ATLANTA CENTER 125.15 263.0	UNICOM 122.8 (CTAF) ①



ELEV 3178	TDZE 3142
-----------	-----------



CATEGORY	A	B	C	D
LPV DA*	3799-1 $\frac{1}{8}$		657 (700-1 $\frac{1}{8}$)	
LPV DA	4052-4		910 (900-4)	
LNAV/VNAV DA	4024-4		882 (900-4)	
LNAV MDA	4560-1 $\frac{1}{4}$ 1418 (1400-1 $\frac{1}{4}$)	4560-1 $\frac{1}{2}$ 1418 (1400-1 $\frac{1}{2}$)	4560-3	1418 (1400-3)
C CIRCLING	4560-1 $\frac{1}{4}$ 1382 (1400-1 $\frac{1}{4}$)	4560-1 $\frac{1}{2}$ 1382 (1400-1 $\frac{1}{2}$)	5140-3 1962 (2000-3)	5180-3 2002 (2100-3)

REIL Rwy 28 ①
MIRL Rwy 10-28 ①

SE-2, 13 JUN 2024 to 11 JUL 2024

SE-2, 13 JUN 2024 to 11 JUL 2024