

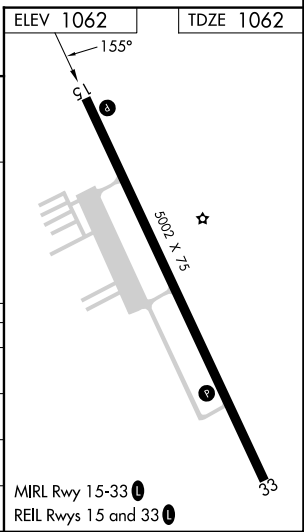
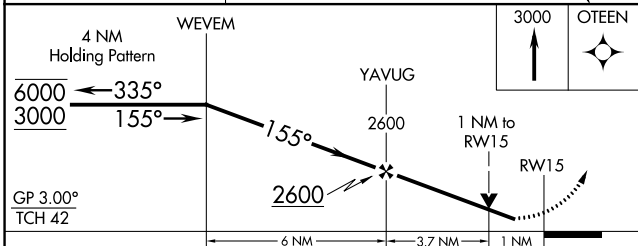
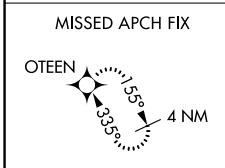
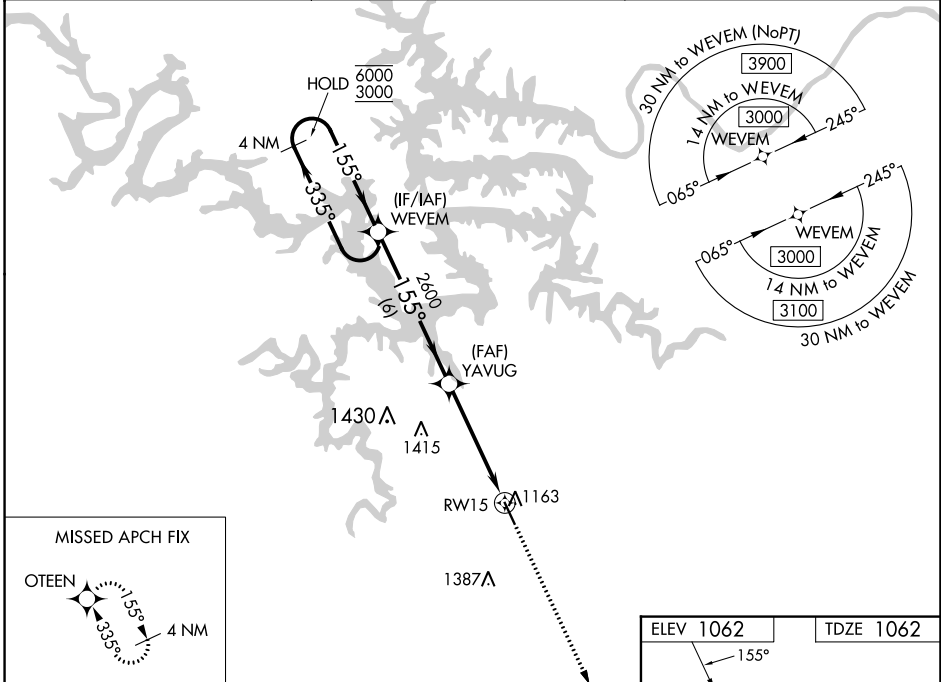
WAAS CH 50219 W15A	APP CRS 155°	Rwy Idg TDZE Apt Elev	5002 1062 1062
--	------------------------	-----------------------------	---

RNAV (GPS) RWY 15

CAMDENTON MEML-LAKE RGNL (OZS)

RNP APCH - GPS.	MISSED APPROACH: Climb to 3000 direct OTEEN and hold.
<p>▼ Rwy 15 helicopter visibility reduction below 3/4 SM NA. ▲ For uncompensated Baro-VNAV systems, LNAV/VNAV NA below -17°C or above 54°C.</p>	

AWOS-3PT 120.225	MIZZU APP CON 124.1 353.925	UNICOM 122.8 (CTAF) 0
----------------------------	---------------------------------------	---------------------------------



CATEGORY	A	B	C	D
LPV DA	1312-1	250 (300-1)		NA
LNAV/VNAV DA	1313-1	251 (300-1)		NA
LNAV MDA	1420-1	358 (400-1)		NA
C CIRCLING	1520-1	458 (500-1)	1700-1 3/4 638 (700-1 3/4)	NA

NC-3, 13 JUN 2024 to 11 JUL 2024

NC-3, 13 JUN 2024 to 11 JUL 2024