

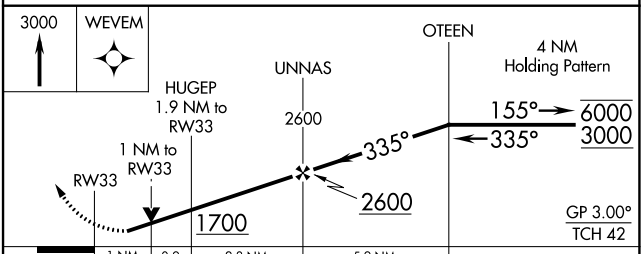
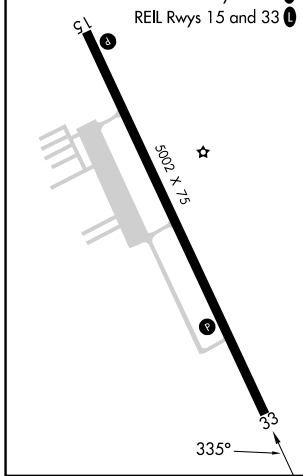
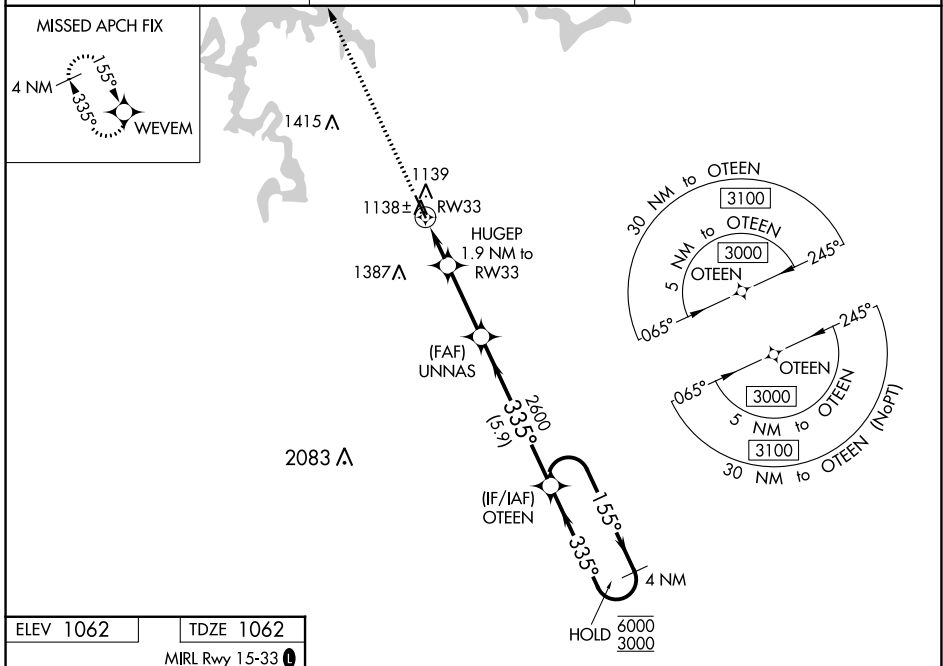
WAAS CH <b>97419</b> <b>W33A</b>	APP CRS <b>335°</b>	Rwy Idg TDZE Apt Elev	<b>5002</b> <b>1062</b> <b>1062</b>
--	------------------------	-----------------------------	---

# RNAV (GPS) RWY 33

CAMDENTON MEML-LAKE RGNL (OZS)

RNP APCH - GPS.	MISSED APPROACH: Climb to 3000 direct WEVEM and hold.
<p><b>▼</b> Rwy 33 helicopter visibility reduction below ¼ SM NA.  <b>▲</b> For uncompensated Baro-VNAV systems, LNAV/VNAV NA below -17°C or above 54°C.</p>	

AWOS-3PT <b>120,225</b>	MIZZU APP CON <b>124.1 353.925</b>	UNICOM <b>122.8 (CTAF) 0</b>
----------------------------	---------------------------------------	---------------------------------



CATEGORY	A	B	C	D
LPV DA	1312-1	250 (300-1)		NA
LNAV/VNAV DA	1312-1	250 (300-1)		NA
LNAV MDA	1400-1	338 (400-1)		NA
<b>☑</b> CIRCLING	1520-1	458 (500-1)	1700-1¾ 638 (700-1¾)	NA

NC-3, 13 JUN 2024 to 11 JUL 2024

NC-3, 13 JUN 2024 to 11 JUL 2024