

|  |                        |   |
|--|------------------------|---|
| WAAS<br>Ch <b>49025</b><br><b>W27A</b> | APP CRS<br><b>273°</b> | Rwy Idg <b>4800</b><br>TDZE <b>481</b><br>Apr Elev <b>483</b> |
|--|------------------------|---|

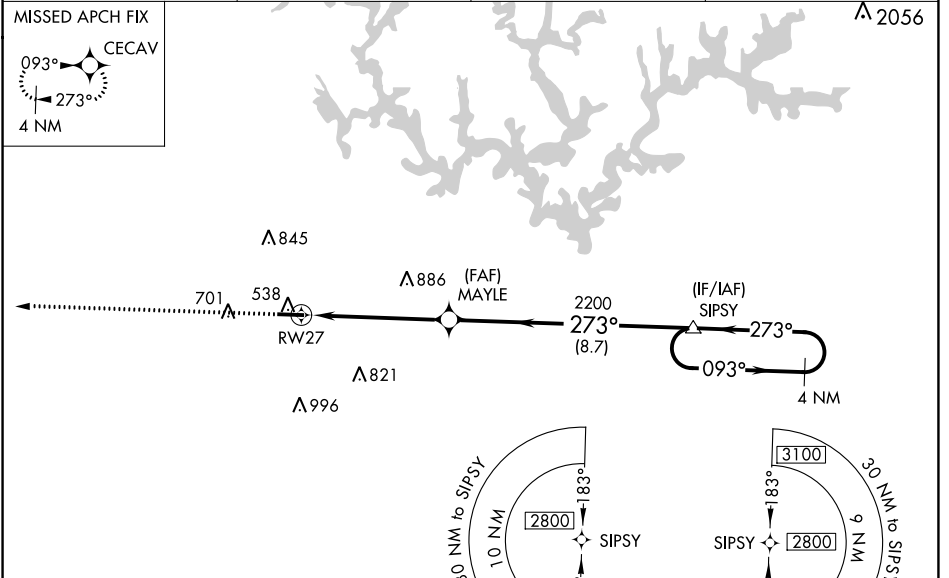
# RNAV (GPS) RWY 27

WALKER COUNTY-BEVILL FLD (JF'X)

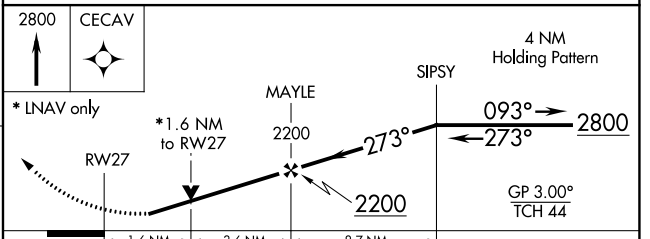
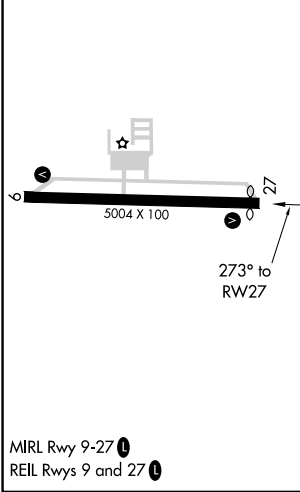
**⚠** Baro-VNAV NA when using Birmingham altimeter setting. For uncompensated Baro-VNAV systems, LNAV/VNAV NA below -15°C (5°F) or above 40°C (104°F). DME/DME RNP-0.3 NA. Helicopter visibility reduction below 3/4 SM NA. VDP NA with Birmingham altimeter setting. When local altimeter setting not received, use Birmingham altimeter setting and increase all DA 104 feet and all MDA 120 feet. Increase LPV all Cats, LNAV/VNAV all Cats, LNAV Cat C/D and Circling Cat C visibility 3/8 mile and Circling Cat D visibility 1/4 mile.

MISSED APPROACH: Climb to 2800 direct CECAV and hold.

|                            |  |                       |  |
|----------------------------|--|-----------------------|--|
| AWOS-3PT<br><b>119.225</b> | BIRMINGHAM APP CON<br><b>127.675 338.2</b> | GCO<br><b>121.725</b> | UNICOM<br><b>122.7 (CTAF)</b> <b>⓪</b> |
|----------------------------|--|-----------------------|--|



|                 |          |                 |
|-----------------|----------|-----------------|
| ELEV <b>483</b> | <b>D</b> | TDZE <b>481</b> |
|-----------------|----------|-----------------|



| CATEGORY      | A                     | B                     | C                     | D                             |
|---------------|-----------------------|-----------------------|-----------------------|-------------------------------|
| LPV DA        |                       | 789-1                 | 308 (300-1)           |                               |
| LNAV/ DA VNAV |                       | 964-1 5/8             | 483 (500-1 5/8)       |                               |
| LNAV MDA      | 1040-1                | 559 (600-1)           | 1040-1 5/8            | 559 (600-1 5/8)               |
| CIRCLING      | 1040-1<br>557 (600-1) | 1080-1<br>597 (600-1) | 1160-2<br>677 (700-2) | 1360-2 3/4<br>877 (900-2 3/4) |

SE-4, 13 JUN 2024 to 11 JUL 2024

SE-4, 13 JUN 2024 to 11 JUL 2024