

WAAS Ch <b>93725</b> <b>W09A</b>	APP CRS <b>093°</b>	Rwy Idg <b>4800</b> TDZE <b>483</b> Apt Elev <b>483</b>
--	------------------------	---

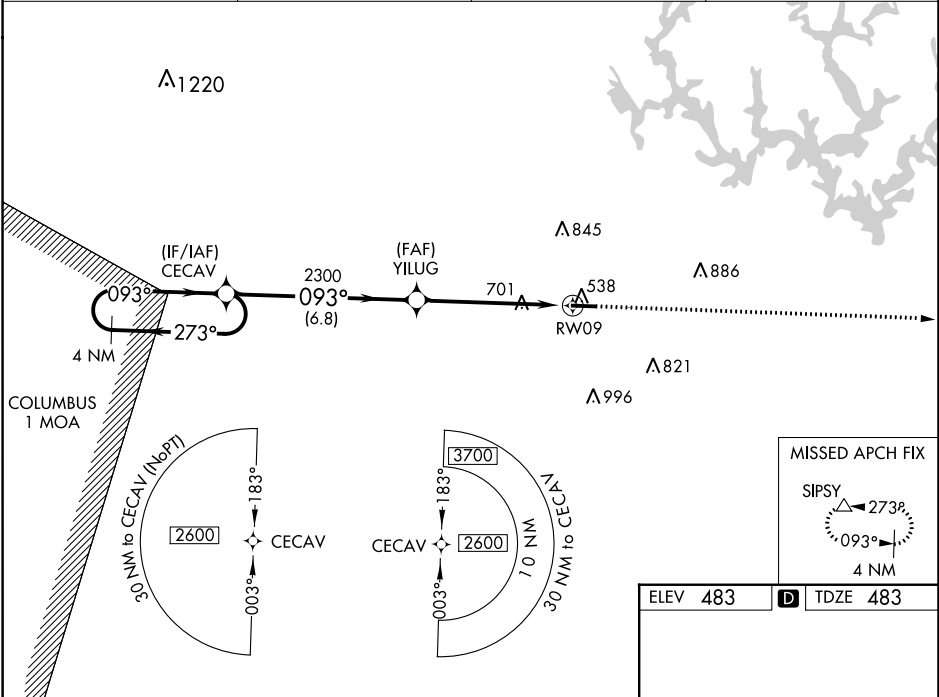
# RNAV (GPS) RWY 9

WALKER COUNTY-BEVILL FLD (JFX)

**⚠** Baro-VNAV NA when using Birmingham altimeter setting. For uncompensated Baro-VNAV systems, LNAV/VNAV NA below -15°C (5°F) or above 40°C (104°F). DME/DME RNP-0.3 NA. Helicopter visibility reduction below 1 SM NA. When local altimeter setting not received, use Birmingham altimeter setting and increase all DA 104 feet and all MDA 120 feet; increase LPV all Cats, LNAV Cats C/D and Circling Cat D visibility ¼ mile increase LNAV/VNAV all Cats and Circling Cat C visibility ⅓ mile.

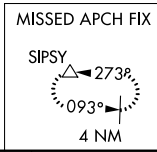
**MISSED APPROACH:**  
Climb to 2800 direct SIPSY and hold.

AWOS-3PT <b>119.225</b>	BIRMINGHAM APP CON <b>127.675 338.2</b>	GCO <b>121.725</b>	UNICOM <b>122.7 (CTAF) 0</b>
----------------------------	--	-----------------------	---------------------------------

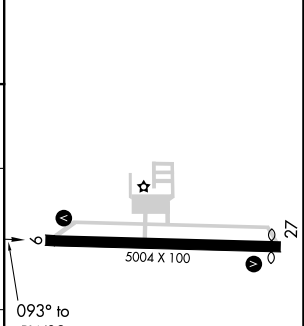
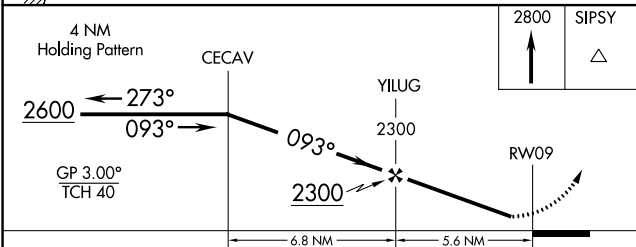


SE-4, 13 JUN 2024 to 11 JUL 2024

SE-4, 13 JUN 2024 to 11 JUL 2024



ELEV 483	<b>D</b> TDZE 483
----------	-------------------



CATEGORY	A	B	C	D
LPV DA	751-1 268 (300-1)			
LNAV/VNAV DA	952-1½ 469 (500-1½)			
LNAV MDA	1040-1	557 (600-1)	1040-1½	557 (600-1½)
CIRCLING	1040-1 557 (600-1)	1080-1 597 (600-1)	1160-2 677 (700-2)	1360-2¾ 877 (900-2¾)

MIRL Rwy 9-27 0  
REIL Rws 9 and 27 0