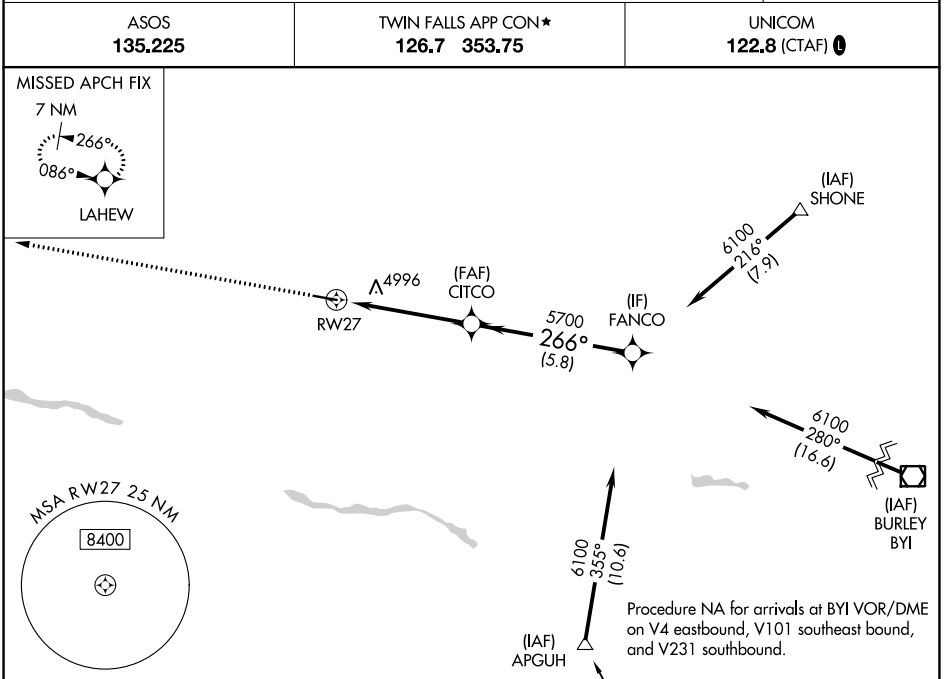


WAAS CH 90514 W27A	APP CRS 266°	Rwy Idg TDZE Apt Elev	5002 4053 4053
--	------------------------	-----------------------------	---

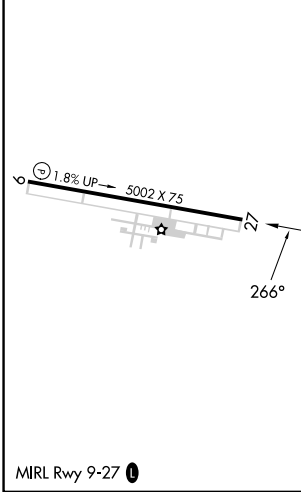
RNAV (GPS) RWY 27

JEROME COUNTY (JER)

RNP APCH.	<p>▼ Circling NA north of Rwy 9 and 27. ▲ Rwy 27 helicopter visibility reduction below $\frac{3}{4}$ SM NA.</p>	MISSED APPROACH: Climb to 6500 direct LAHEW and hold.
ASOS 135.225		TWIN FALLS APP CON* 126.7 353.75



ELEV 4053	TDZE 4053
-----------	-----------



CATEGORY	A	B	C	D
LPV DA	4403-1		350 (400-1)	
LNAV MDA	5300-1½ 1247 (1300-1¼)	5300-1½ 1247 (1300-1½)	5300-3 1247 (1300-3)	
C CIRCLING	5300-1½ 1247 (1300-1¼)	5300-1½ 1247 (1300-1½)	5300-3 1247 (1300-3)	

NW-1, 13 JUN 2024 to 11 JUL 2024

NW-1, 13 JUN 2024 to 11 JUL 2024