

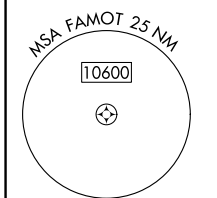
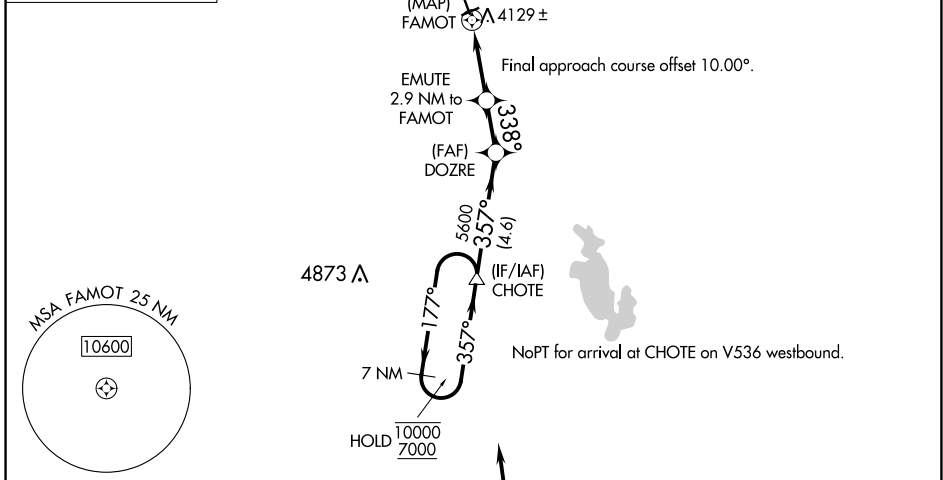
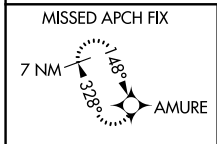
RNAV (GPS) RWY 33

CHOTEAU (CII)

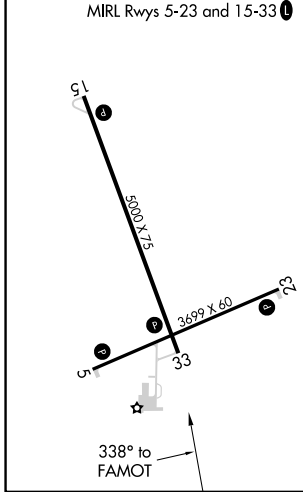
APP CRS 338°	Rwy ldg 5000
	TDZE 3943
	Apt Elev 3947

RNP APCH.	MISSED APPROACH: Climb to 6600 direct AMURE and hold.
NA Rwy 33 helicopter visibility reduction below 3/4 SM NA.	

AWOS-2 119.275	SALT LAKE CITY CENTER 133.4 285.4	UNICOM 122.8 (CTAF) ①
--------------------------	---------------------------------------------	---------------------------------



ELEV 3947	TDZE 3943
-----------	-----------



6600	AMURE	VGSI and descent angles not coincident (VGSI Angle 3.00/TCH 25).	CHOTE 7 NM Holding Pattern		
	EMUTE 2.9 NM to FAMOT	DOZRE			
	1.1 NM to FAMOT	3.00° TCH 45	177° 10000 / 7000		
	FAMOT	338° 5000	357°		
	0.2	1.1 NM	1.8 NM	1.9 NM	4.6 NM

CATEGORY	A	B	C	D
INAV MDA	4380-1	437 (500-1)	4380-1¼	437 (500-1¼)
CIRCLING	4440-1	493 (500-1)	4600-1¾ 653 (700-1¾)	4900-3 953 (1000-3)

NW-1, 13 JUN 2024 to 11 JUL 2024

NW-1, 13 JUN 2024 to 11 JUL 2024