

WAAS CH <b>49133</b> <b>W36A</b>	APP CRS <b>001°</b>	Rwy Idg TDZE Apt Elev	<b>5003</b> <b>164</b> <b>164</b>
--	------------------------	-----------------------------	---

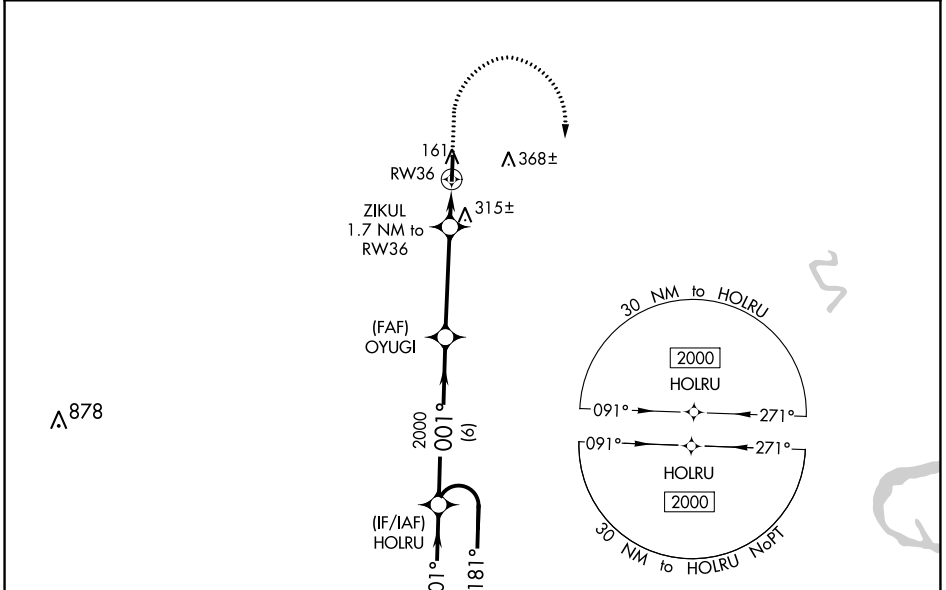
# RNAV (GPS) RWY 36

BILLY FREE MUNI (ØMØ)

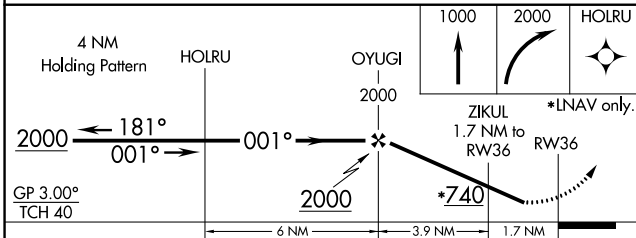
**⚠** Baro-VNAV NA. DME/DME RNP-0.3 NA. Use Pine Bluff altimeter setting, when not received use Greenville, MS altimeter setting and increase all DA 22 feet and all MDA 40 feet; increase LPV all Cats visibility 1/8 mile and Circling Cat C visibility 1/4 mile. Helicopter visibility reduction below 3/4 SM NA.

**MISSED APPROACH:** Climb to 1000 then climbing right turn to 2000 direct HOLRU and hold.

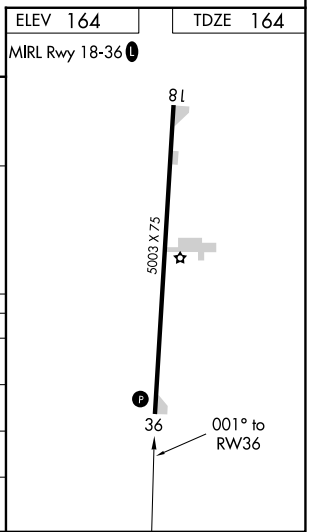
PBF ASOS <b>120.775</b>	MEMPHIS CENTER <b>135.875 269.35</b>	UNICOM <b>122.8 (CTAF) Ø</b>
----------------------------	---	---------------------------------



ELEV 164	TDZE 164
MIRL Rwy 18-36 Ø	



CATEGORY	A	B	C	D
LPV DA	481-1	317 (400-1)		NA
LNAV/VNAV DA	492-1 1/8	328 (400-1 1/8)		NA
LNAV MDA	640-1	476 (500-1)	640-1 3/8 476 (500-1 3/8)	NA
<b>C</b> CIRCLING	780-1	616 (700-1)	800-1 3/4 636 (700-1 3/4)	NA



SC-1, 13 JUN 2024 to 11 JUL 2024

SC-1, 13 JUN 2024 to 11 JUL 2024