

VORTAC CQY <b>114.8</b> Chan <b>95</b>	APP CRS <b>285°</b>	Rwy Idg TDZE Apt Elev <b>N/A</b> <b>N/A</b> <b>500</b>
--	------------------------	--

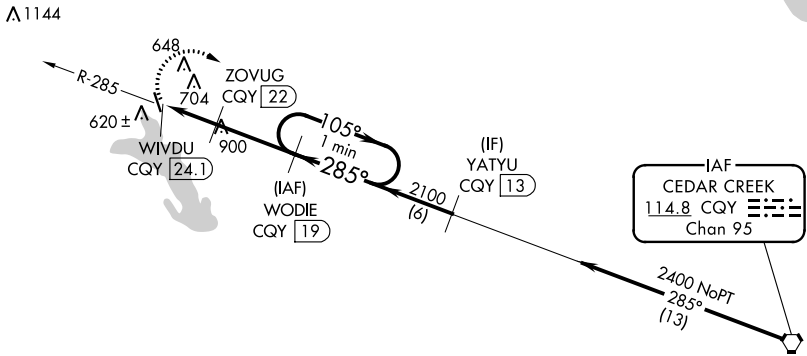
# VOR/DME-A

ENNIS MUNI (F41)

**NA** When local altimeter setting not received, use Midlothian/Waxahachie altimeter setting and increase all MDAs 40 feet and visibility Cat C ¼ SM.

**MISSED APPROACH:** Climbing right turn to 2400 on CQY R-285 to WODIE/19 DME and hold.

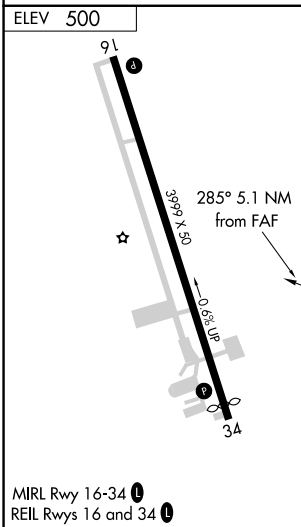
LNC AWOS-3PT <b>118.975</b>	REGIONAL APP CON <b>125.2 343.65</b>	CTAF <b>122.9</b>
--------------------------------	---	----------------------



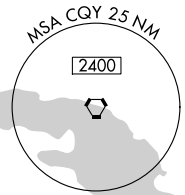
Procedure NA for arrival at CQY VORTAC airway radials 234 CW 263.

SC-2, 13 JUN 2024 to 11 JUL 2024

SC-2, 13 JUN 2024 to 11 JUL 2024



△1156



	2400	WODIE CQY 19		WODIE CQY 19		One Minute Holding Pattern	
		ZOVUG CQY 22	105° → 2400		← 285°		2400
	WIVDU CQY 24.1	285°	2100				
		1420	2.1	3 NM			
CATEGORY	A	B	C	D			
CIRCLING	1200-1 700 (700-1)	1200-1¼ 700 (700-1¼)	1300-2¼ 800 (800-2¼)	NA			