

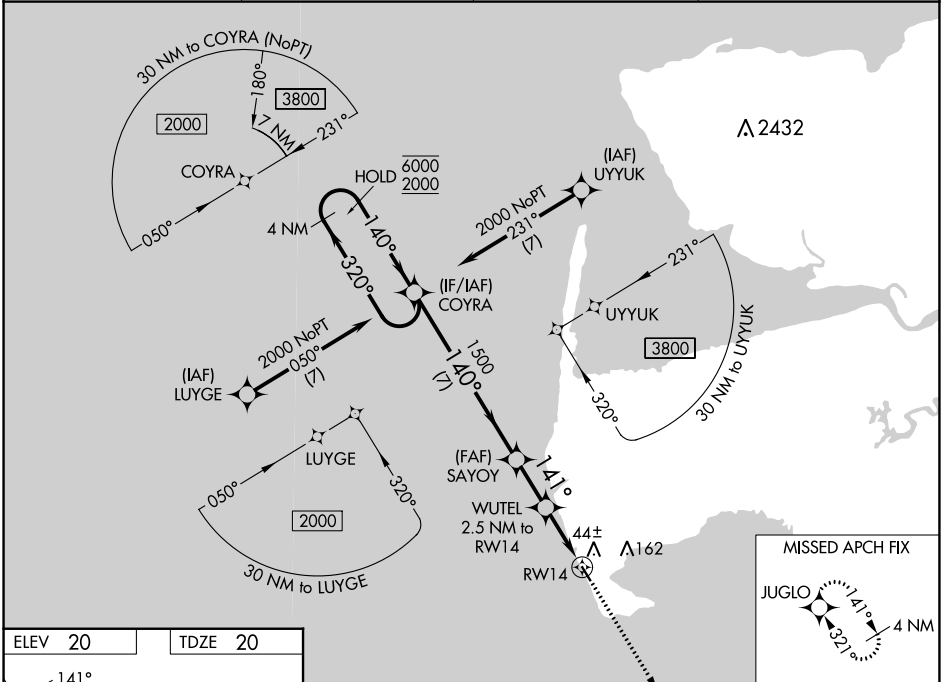
WAAS CH 82224 W14A	APP CRS 141°	Rwy Idg 3300 TDZE 20 Apt Elev 20
--	------------------------	---

RNAV (GPS) RWY 14

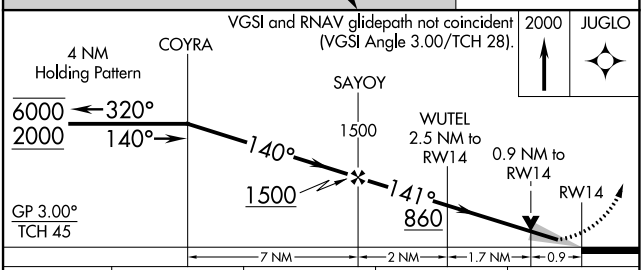
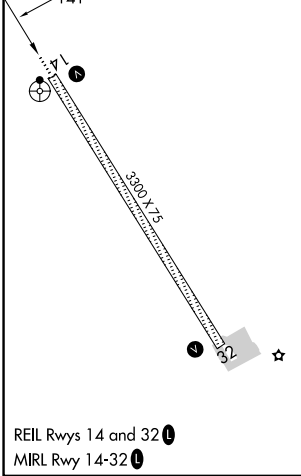
HOOPER BAY (HPB) (PAHP)

RNP APCH - GPS.	MISSED APPROACH: Climb to 2000 direct JUGLO and hold.
Circling Rwy 32 NA at night. For uncompensated Baro-VNAV systems, LNAV/VNAV NA below -19°C or above 54°C.	

AWOS-3P 135.1	ANCHORAGE CENTER 124.5	KENAI RADIO 122.4	CTAF 123.0
-------------------------	----------------------------------	-----------------------------	----------------------



ELEV 20	TDZE 20
---------	---------



CATEGORY	A	B	C	D
LPV DA		220-1	200 (200-1)	
LNAV/VNAV DA		270-1	250 (300-1)	
LNAV MDA		300-1	280 (300-1)	
CIRCLING	400-1 380 (400-1)	480-1 460 (500-1)	480-1½ 460 (500-1½)	580-2 560 (600-2)

AK, 16 MAY 2024 to 11 JUL 2024

AK, 16 MAY 2024 to 11 JUL 2024