

WAAS CH 65725 W32A	APP CRS 321°	Rwy Idg 3300 TDZE 20 Apt Elev 20
--	------------------------	---

RNAV (GPS) RWY 32

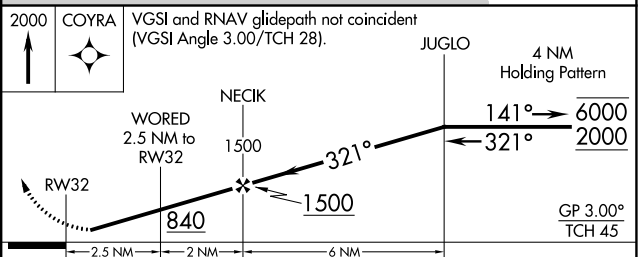
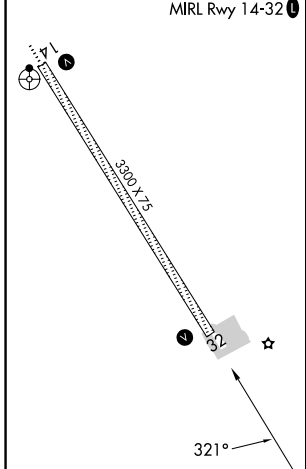
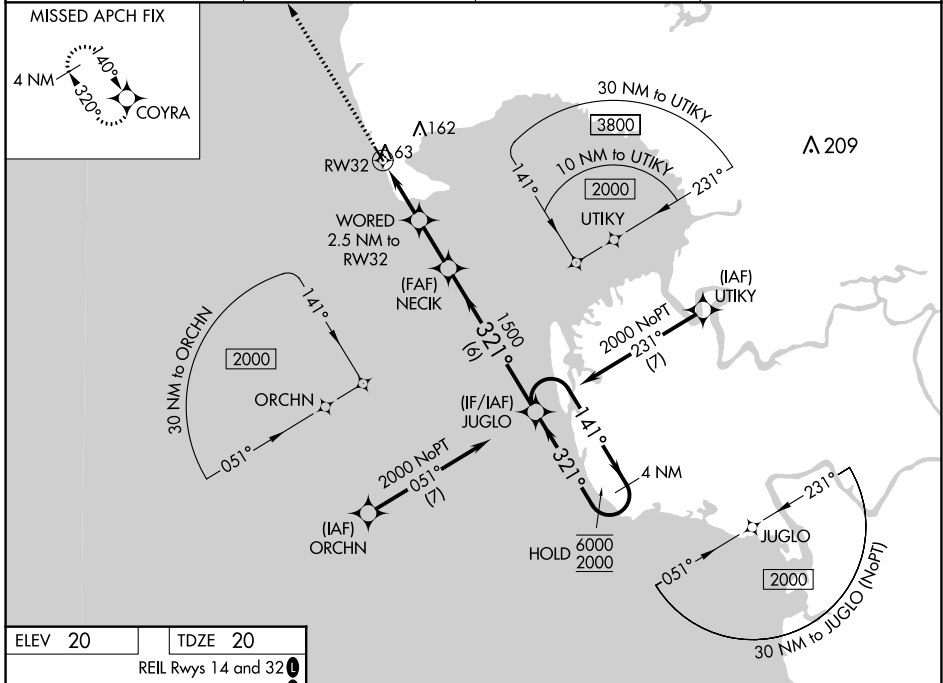
HOOPER BAY (HPB) (PAHP)

RNP APCH - GPS.

⚠ Rwy 32 helicopter visibility reduction below 1 SM NA. For uncompensated Baro-VNAV systems, LNAV/VNAV NA below -19°C or above 54°C.
⚠ Straight-in Rwy 32 NA at night, Circling Rwy 32 NA at night.

MISSED APPROACH: Climb to 2000 direct COYRA and hold.

AWOS-3P 135.1	ANCHORAGE CENTER 124.5	KENAI RADIO 122.4	CTAF 123.0
-------------------------	----------------------------------	-----------------------------	----------------------



CATEGORY	A	B	C	D
LPV DA		270-1	250 (300-1)	
LNAV/VNAV DA		270-1	250 (300-1)	
LNAV MDA		320-1	300 (300-1)	
C CIRCLING	400-1 380 (400-1)	480-1 460 (500-1)	480-1½ 460 (500-1½)	580-2 560 (600-2)

AK, 16 MAY 2024 to 11 JUL 2024

AK, 16 MAY 2024 to 11 JUL 2024