

APP CRS	Rwy Idg	<b>2609</b>
<b>183°</b>	TDZE	<b>777</b>
	Apt Elev	<b>779</b>

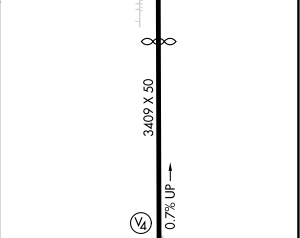
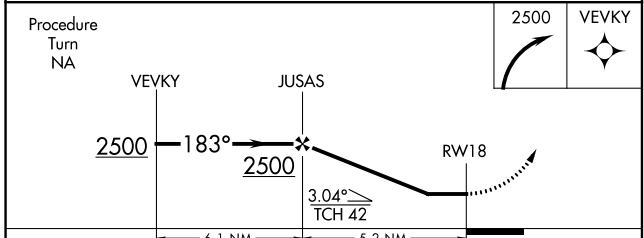
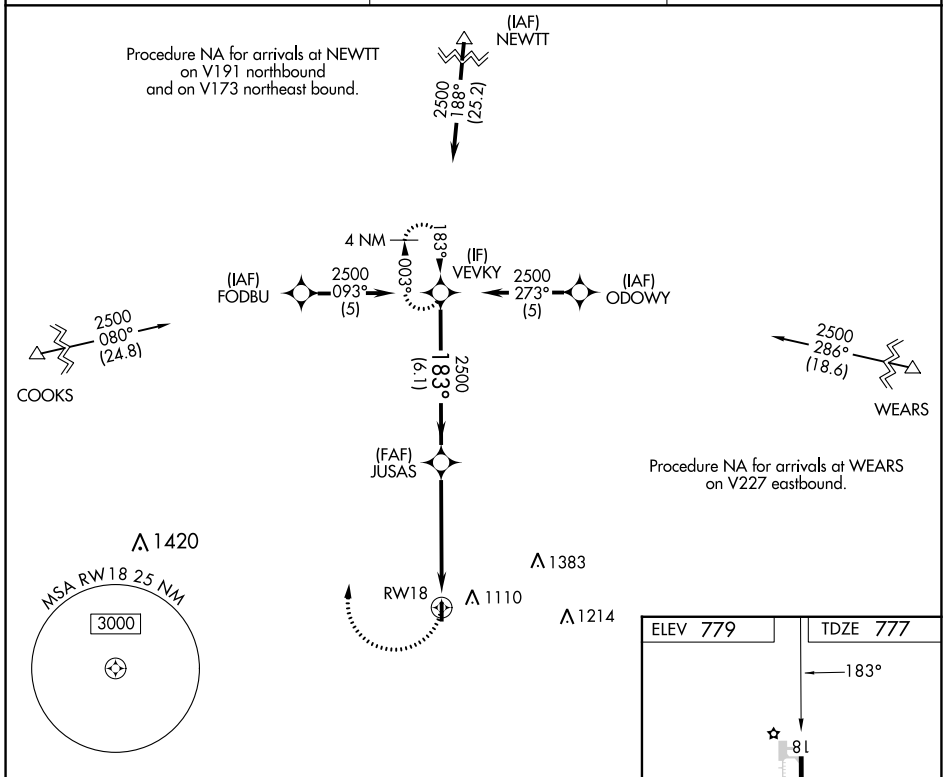
# RNAV (GPS) RWY 18

PAXTON (1C1)

**NA** DME/DME RNP-0.3 NA. Helicopter visibility reduction below 1 SM NA. Use Champaign-Urbana altimeter setting; when not received, use Decatur altimeter setting and increase all MDA 80 feet; increase LNAV Cat C and Circling all Cats visibility ¼ SM. Procedure NA at night.

**MISSED APPROACH:** Climbing right turn to 2500 direct VEVKY and hold.

CMI ASOS <b>124.85</b>	CHAMPAIGN APP CON ★ <b>121.35 285.65</b>	UNICOM <b>122.8 (CTAF)</b>
---------------------------	---	-------------------------------



CATEGORY	A	B	C	D
LNAV MDA	1400-1	623 (700-1)	1400-1¾ 623 (700-1¾)	NA
CIRCLING	1540-1 761 (800-1)	1540-1¼ 761 (800-1¼)	1620-2½ 841 (900-2½)	NA

LIRL Rwy 18-36  
REIL Rwy 18

EC-3, 13 JUN 2024 to 11 JUL 2024

EC-3, 13 JUN 2024 to 11 JUL 2024