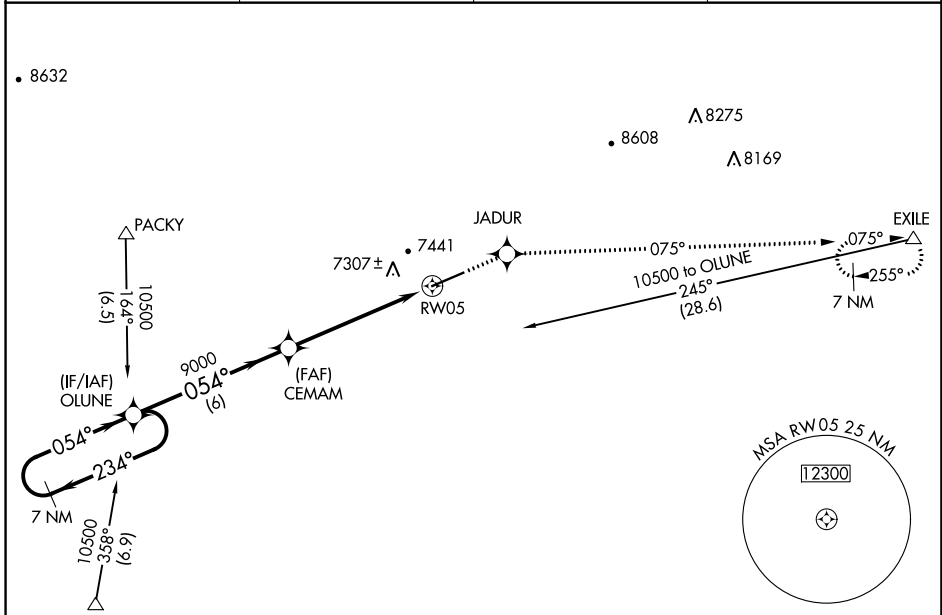


WAAS CH 78302 W05A	APP CRS 054°	Rwy Idg TDZE Apt Elev	7300 7141 7143
--	------------------------	-----------------------------	---

RNAV (GPS) RWY 5

EVANSTON-UINTA COUNTY BURNS FLD (E V W)

RNP APCH. ▼ If local altimeter setting not received, procedure NA. For uncompensated Baro-VNAV systems, LNAV/VNAV NA below -29°C (-20°F) or above 34°C (94°F).		MISSED APPROACH: Climb to 12000 direct JADUR and via 075° track to EXILE and hold, continue climb-in-hold to 12000.	
ASOS 120.0	SALT LAKE CENTER 127.7 354.125	GCO 121.72	UNICOM 123.0 (CTAF) 0



NW-1, 13 JUN 2024 to 11 JUL 2024

NW-1, 13 JUN 2024 to 11 JUL 2024

ELEV 7143		TDZE 7141	
VGSI and RNAV glidepath not coincident (VGSI Angle 3.00/TCH 45). 7 NM Holding Pattern			
10500 ← 234° GP 3.00° TCH 55		OLUNE CEMAM JADUR RW05 EXILE	
054° →		*RNAV only *0.8 NM to RW05	
9000		6 NM 4.8 NM 0.8 NM	
CATEGORY	A	B	D
LPV DA	7391-¾		250 (300-¾)
LNAV/VNAV DA	7643-1¾		502 (500-1¾)
LNAV MDA	7440-1		299 (300-1)
REIL Rwy 5 0 HIRL Rwy 5-23 0			