

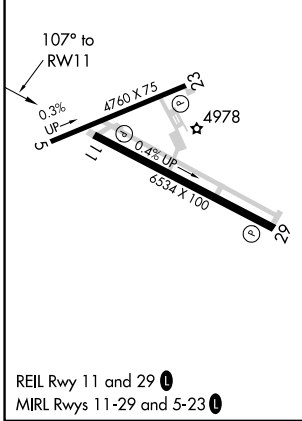
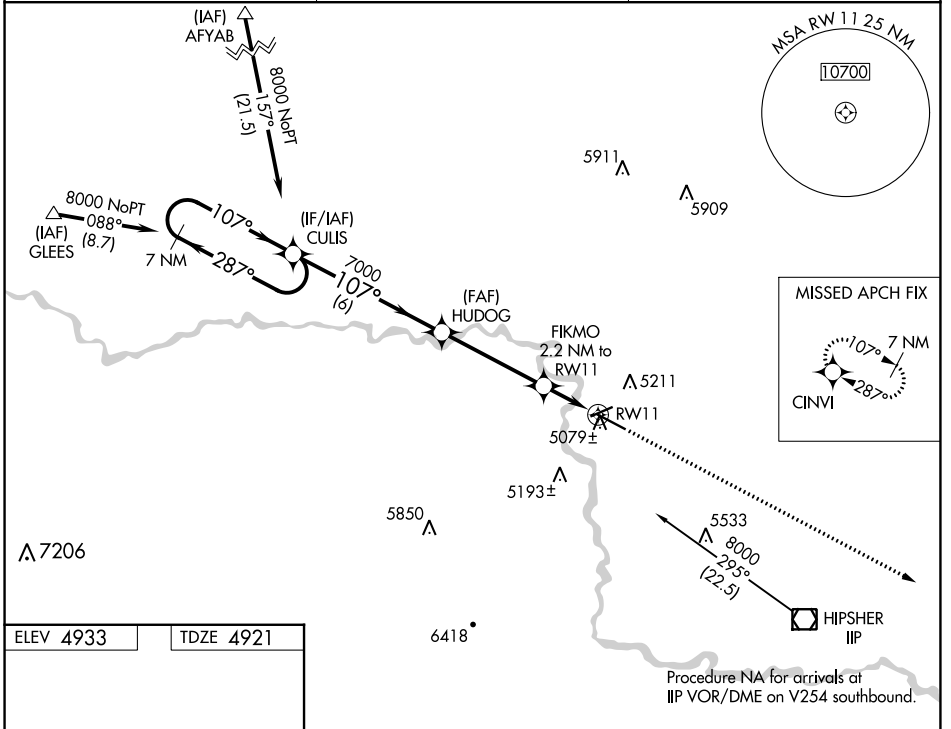
WAAS CH 58018 W11A	APP CRS 107°	Rwy Idg TDZE Apt Elev 6534 4921 4933
--	------------------------	--

RNAV (GPS) RWY 11

CONVERSE COUNTY (DGW)

RNP APCH.	MISSED APPROACH: Climb to 8000 direct CINVI and hold.
For uncompensated Baro-VNAV systems, LNAV/VNAV NA below -24°C (-11°F) or above 39°C (102°F).	

ASOS 135.225	DENVER CENTER 135.6 363.025	UNICOM 122.8 (CTAF) 0
------------------------	---------------------------------------	---------------------------------



7 NM Holding Pattern		CULIS		HUDOG		FIKMO 2.2 NM to RW11		8000	CINVI
8000		7000		7000		*5640		↑	✦
GP 3.00° TCH 40		6 NM		4.1 NM		0.9 NM		*LNAV only	
CATEGORY	A	B	C	D					
LPV DA	5121-3/4				200 (200-3/4)				
LNAV/VNAV DA	5329-1 1/2				408 (400-1 1/2)				
LNAV MDA	5340-1		419 (500-1)		5340-1 1/4		419 (500-1 1/4)		

NW-1, 13 JUN 2024 to 11 JUL 2024

NW-1, 13 JUN 2024 to 11 JUL 2024