

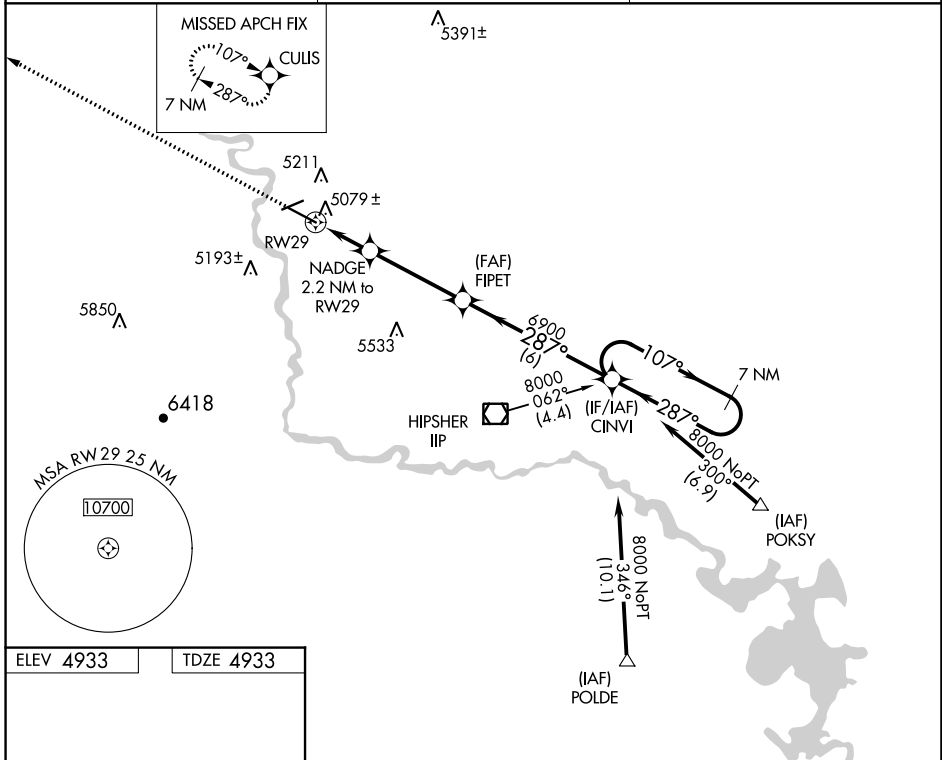
WAAS CH 61018 W29A	APP CRS 287°	Rwy Idg TDZE Apt Elev	6534 4933 4933
--	------------------------	-----------------------------	---

RNAV (GPS) RWY 29

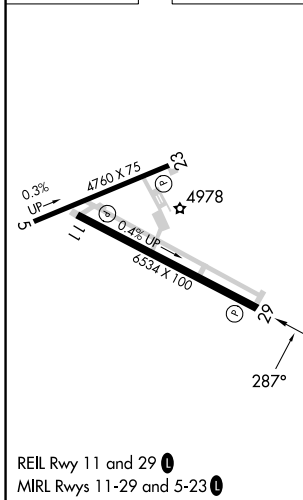
CONVERSE COUNTY (DGW)

RNP APCH-GPS.	MISSED APPROACH: Climb to 8000 direct CULIS and hold.
<p>▼ For uncompensated Baro-VNAV systems, LNAV/VNAV ▲ NA below -24°C or above 39°C.</p>	

ASOS 135.225	DENVER CENTER 135.6 363.025	UNICOM 122.8 (CTAF) 0
------------------------	---------------------------------------	---------------------------------



ELEV 4933	TDZE 4933
-----------	-----------



8000	CULIS	VGSI and RNAV glidepath not coincident (VGSI Angle 3.00/TCH 45).	7 NM Holding Pattern	
	NADGE 2.2 NM to RW29	FIPET 6900	CINVI	
*LNAV only	*1.5 NM to RW29	5660*	6900	
	1.5	0.7	3.8 NM	
			6 NM	
			107°	
			287°	
			8000	
			GP 3.00° TCH 39	
CATEGORY	A	B	C	D
LPV DA	5133-3/4 200 (200-3/4)			
LNAV/VNAV DA	5369-1 1/2 436 (500-1 1/2)			
LNAV MDA	5440-1	507 (600-1)	5440-1 1/2	507 (600-1 1/2)
CIRCLING	5520-1	587 (600-1)	5680-2 1/4	5820-3
			747 (800-2 1/4)	887 (900-3)

NW-1, 13 JUN 2024 to 11 JUL 2024

NW-1, 13 JUN 2024 to 11 JUL 2024