

APP CRS <b>318°</b>	Rwy Idg <b>4660</b>
	TDZE <b>988</b>
	Apt Elev <b>989</b>

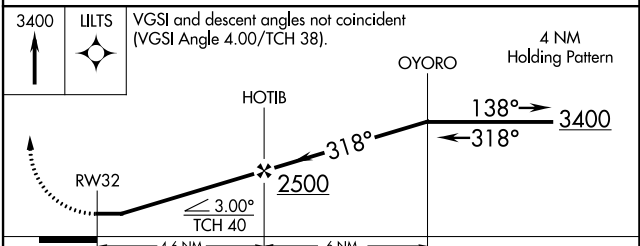
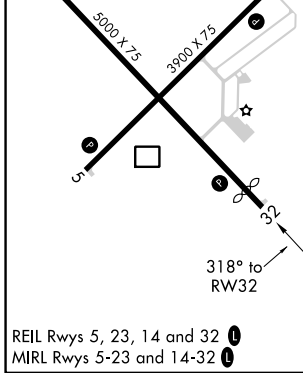
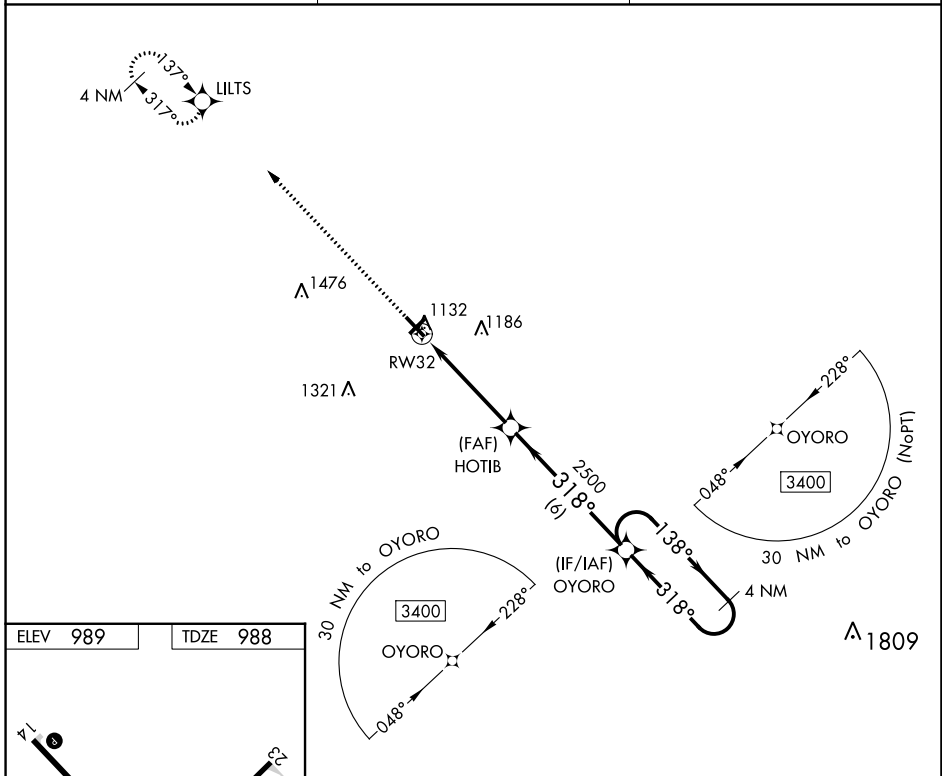
# RNAV (GPS) RWY 32

BURNETT COUNTY (RZN)

**⚠** DME/DME RNP-0.3 NA. When local altimeter setting not received, use Rush City, MN altimeter setting and increase all MDA 80 feet; increase LNAV Cat C/D visibility ¼ mile, and Circling Cat C/D visibility ¼ mile. Helicopter visibility reduction below 1 SM NA. Night landing: Rwy 5, 23, 32 NA.

**MISSED APPROACH:**  
Climb to 3400 direct LILTS and hold.

AWOS-3 <b>118.325</b>	MINNEAPOLIS CENTER <b>121.05 225.775</b>	UNICOM <b>122.8 (CTAF) 0</b>
--------------------------	---	---------------------------------



CATEGORY	A	B	C	D
LNAV MDA	1440-1 452 (500-1)		1440-1½ 452 (500-1½)	
<b>C</b> CIRCLING	1440-1 451 (500-1)		1540-1½ 551 (600-1½)	1680-2¼ 691 (700-2¼)

EC-3, 13 JUN 2024 to 11 JUL 2024

EC-3, 13 JUN 2024 to 11 JUL 2024