

APP CRS	Rwy Idg	3900
046°	TDZE	989
	Apt Elev	989

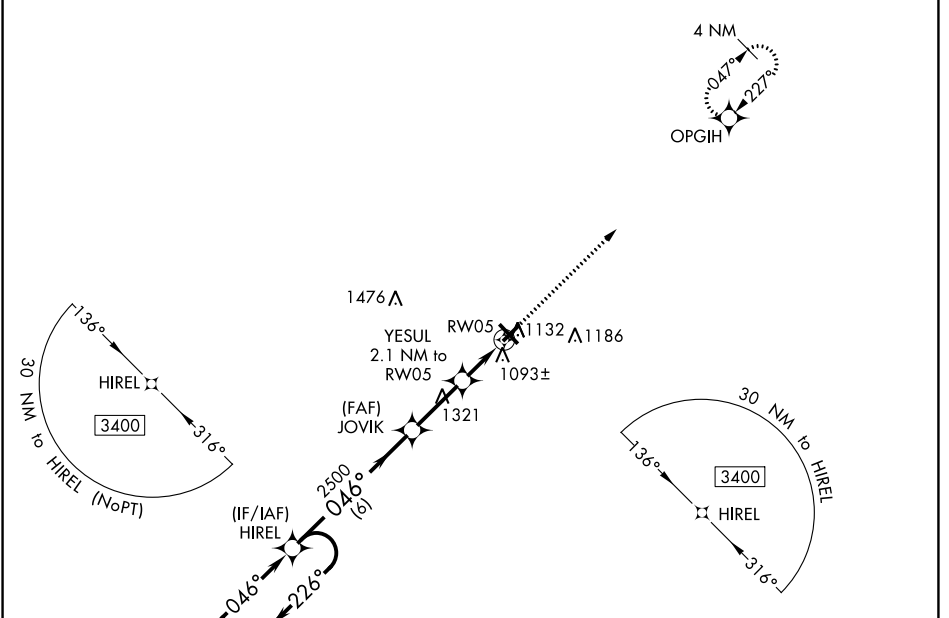
RNAV (GPS) RWY 5

BURNETT COUNTY (RZN)

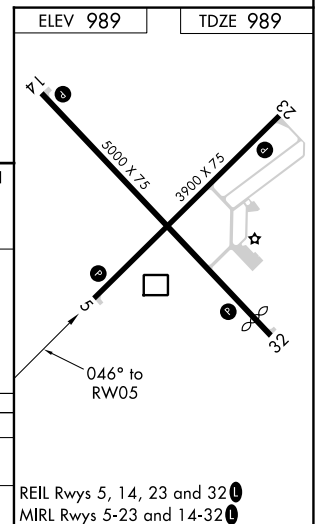
⚠ DME/DME RNP-0.3 NA. Helicopter visibility reduction below 1 SM NA.
⚠ Night Landing: Rwy 5, 23, 32 NA. When local altimeter setting not received, use Rush City, MN altimeter setting and increase all MDA 80 feet; increase LNAV Cat C/D visibility 3/8 mile, and Circling Cat C/D visibility 1/4 mile.

MISSED APPROACH: Climb to 3400 direct OPGIH and hold.

AWOS-3 118.325	MINNEAPOLIS CENTER 121.05 235.775	UNICOM 122.8 (CTAF) 📶
--------------------------	---	--



4 NM Holding Pattern	HIREL	VGSI and descent angles not coincident (VGSI Angle 3.50/TCH 31).	3400	OPGIH
3400	← 226°	→ 046°	↓	⬠
	046°	JOVIK		
	2500	3.00° TCH 40	1680	
	6 NM	2.5 NM	2.1 NM	
CATEGORY	A	B	C	D
LNAV MDA	1360-1 371 (400-1)			
📶 CIRCLING	1440-1	451 (500-1)	1540-1½ 551 (600-1½)	1680-2¼ 691 (700-2¼)



EC-3, 13 JUN 2024 to 11 JUL 2024

EC-3, 13 JUN 2024 to 11 JUL 2024