

BARMY FIVE DEPARTURE (RNAV)

SE-2, 13 JUN 2024 to 11 JUL 2024

RNAV 1 - DME/DME/IRU or GPS.
RADAR required.

TOP ALTITUDE:
3000

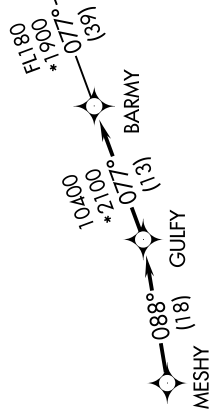
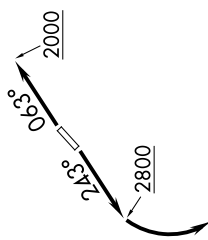
CHARLOTTE DEP CON
134.75 257.2
AWOS-3
119.675
CLNC DEL (GCO)
124.9
UNICOM
123.05



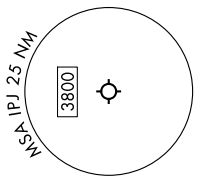
RALEIGH/DURHAM
RDU



NOTE: For turbo jets only.
NOTE: If unable to accept climb rates, advise ATC on initial contact.
NOTE: Transponder code will be issued via PDC or Charlotte CLNC DEL.
NOTE: Upon reaching 10000 MSL, accelerate to and maintain 280K, if unable advise ATC.



TAKEOFF MINIMUMS
Rwys 5, 23: Standard.



NOTE: Chart not to scale.

DEPARTURE ROUTE DESCRIPTION

TAKEOFF RUNWAY 5: Climb on heading 063° to 2000 before proceeding on course, then on heading assigned by ATC, thence. . . .
TAKEOFF RUNWAY 23: Climb on heading 243° to 2800 before turning left, then on heading assigned by ATC, thence. . . .

. . . on RADAR vectors to MESHY, then on depicted route to BARMY. Then on assigned transition. Maintain 3000, expect clearance to filed altitude within 10 minutes after departure.

- NUTZE TRANSITION (BARMY5.NUTZE)
- RALEIGH/DURHAM TRANSITION (BARMY5.RDU)
- TAR RIVER TRANSITION (BARMY5.TY)

SE-2, 13 JUN 2024 to 11 JUL 2024