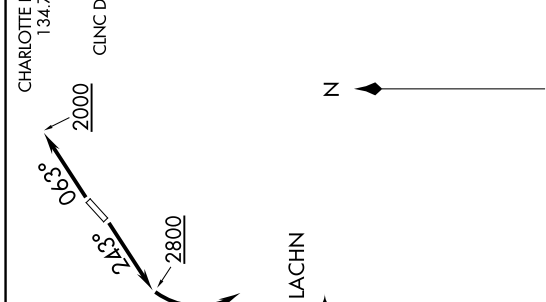


BOBZY FIVE DEPARTURE (RNAV)

LINCOLN-TON-LINCOLN COUNTY RGNL (IPJ)
LINCOLN-TON, NORTH CAROLINA

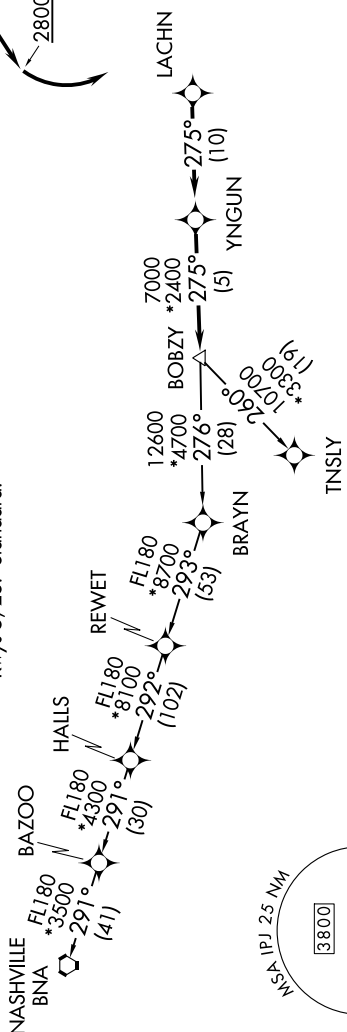
SE-2, 13 JUN 2024 to 11 JUL 2024

CHARLOTTE DEP CON
134.75 257.2
AWOS-3
119.675
CLNC DEL (GCO)
124.9
UNICOM
123.05



RNAV 1-DME/DME/IRU or GPS.
RADAR required.

TAKEOFF MINIMUMS
Rwys 5, 23: Standard.



TOP ALTITUDE:
3000

BOBZY FIVE DEPARTURE (RNAV)

(BOBZY5.BOBZY) 21MAR24

LINCOLN-TON, NORTH CAROLINA
LINCOLN-TON-LINCOLN COUNTY RGNL (IPJ)

DEPARTURE ROUTE DESCRIPTION

TAKEOFF RUNWAY 5: Climb on heading 063° to 2000 before proceeding on course, then on heading assigned by ATC, thence. . . .

TAKEOFF RUNWAY 23: Climb on heading 243° to 2800 before turning left, then on heading assigned by ATC, thence. . . .

. . . . on RADAR vectors to LACHN, then on depicted route to BOBZY, then on assigned transition. Maintain 3000, expect clearance to filed altitude within 10 minutes after departure.

NASHVILLE TRANSITION (BOBZY5.BNA)
TNSLY TRANSITION (BOBZY5.TNSLY)

NOTE: For turbo jets only.
NOTE: If unable to accept climb rates, advise ATC on initial contact.
NOTE: Transponder code will be issued via PDC or Charlotte CLNC DEL.
NOTE: Upon reaching 10000 MSL, accelerate to and maintain 280K, if unable advise ATC.

NOTE: Chart not to scale.

SE-2, 13 JUN 2024 to 11 JUL 2024