

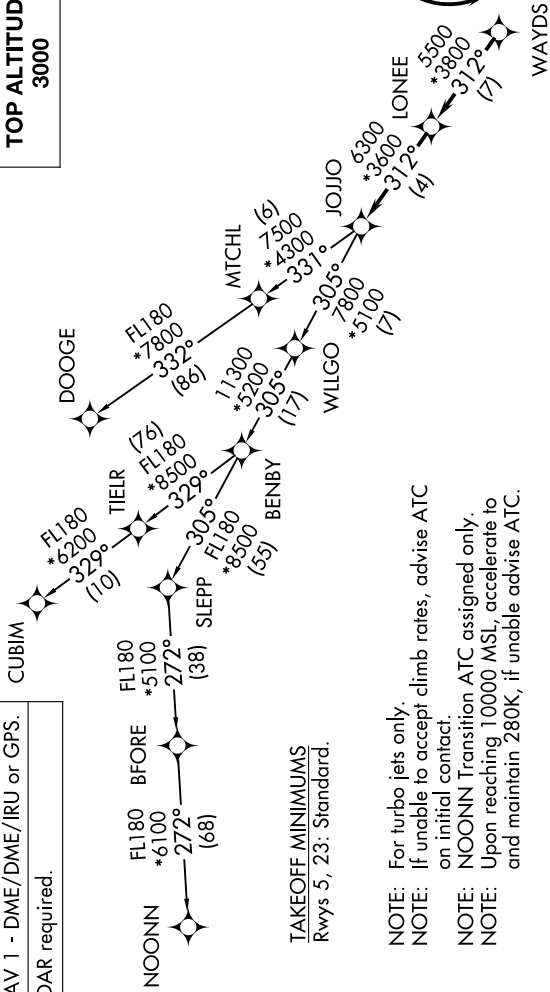
# JOJO FIVE DEPARTURE (RNAV)

SE-2, 13 JUN 2024 to 11 JUL 2024

RNAV 1 - DME/DME/IRU or GPS.  
RADAR required.

**TOP ALTITUDE:**  
**3000**

CHARLOTTE DEP CON  
134.75 257.2  
AWOS-3  
119.675  
CLNC DEL (GCO)  
124.9  
UNICOM (CTAF)  
123.05



**TAKEOFF MINIMUMS**  
Rwys 5, 23: Standard.

- NOTE: For turbo jets only.
- NOTE: If unable to accept climb rates, advise ATC on initial contact.
- NOTE: NOONN Transition ATC assigned only.
- NOTE: Upon reaching 10000 MSL, accelerate to and maintain 280K, if unable advise ATC.

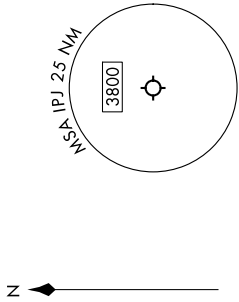
## DEPARTURE ROUTE DESCRIPTION

**TAKEOFF RUNWAY 5:** Climb on heading 063° to 2000 before proceeding on course, then on heading assigned by ATC, thence. . . .

**TAKEOFF RUNWAY 23:** Climb on heading 243° to 2800 before turning left, then on heading assigned by ATC, thence. . . .

. . . on RADAR vectors to WAYDS, then on depicted route to JOJJO. Then on assigned transition. Maintain 3000, expect filed altitude within 10 minutes after departure.

- CUBIM TRANSITION (JOJO5.CUBIM)
- DOOGE TRANSITION (JOJO5.DOOGE)
- NOONN TRANSITION (JOJO5.NOONN)



NOTE: Chart not to scale.

SE-2, 13 JUN 2024 to 11 JUL 2024