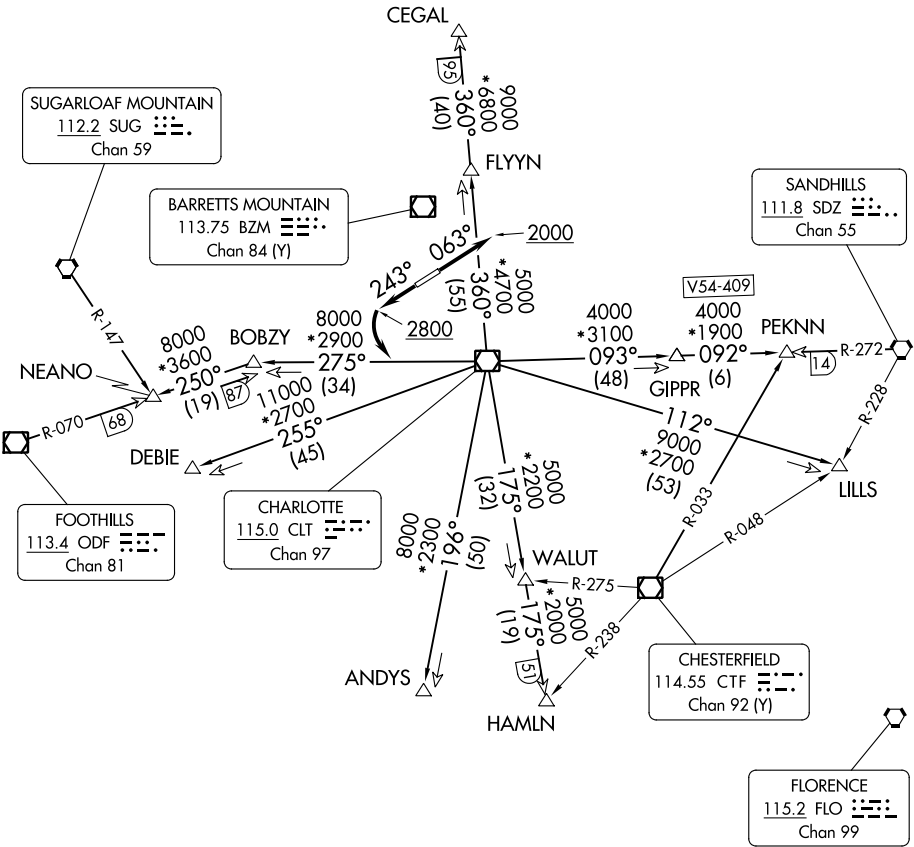


CHARLOTTE DEP CON
 134.75 257.2
 AWOS-3
 119.675
 CLNC DEL (GCO)
 124.9
 UNICOM (CTAF)
 123.05

**TOP ALTITUDE:
 3000**

RADAR and DME required.

TAKEOFF MINIMUMS
 Rwy 5, 23: Standard.



SE-2, 13 JUN 2024 to 11 JUL 2024

SE-2, 13 JUN 2024 to 11 JUL 2024

- NOTE: For propeller aircraft only.
- NOTE: Turboprops: Operate in a manner that will result in best forward speed and climb rate.
- NOTE: Transponder code will be issued via Charlotte clearance delivery.

(CONTINUED ON FOLLOWING PAGE)

NOTE: Chart not to scale.