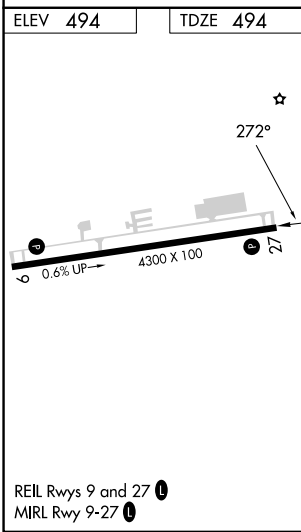
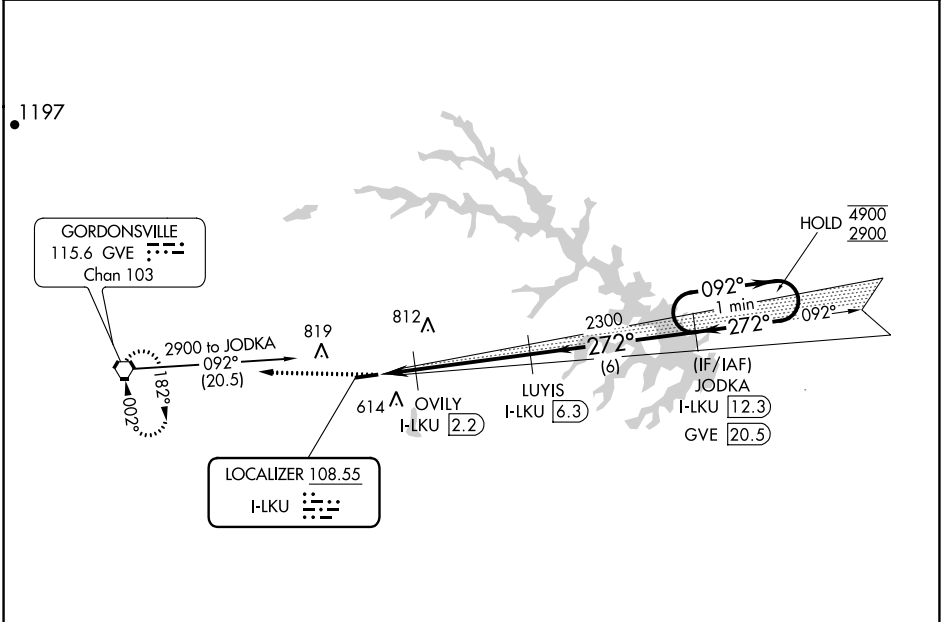


LOC I-LKU <b>108.55</b>	APP CRS <b>272°</b>	Rwy Idg TDZE Apt Elev	<b>4300</b> <b>494</b> <b>494</b>
----------------------------	------------------------	-----------------------------	---

# LOC RWY 27

LOUISA COUNTY/FREEMAN FLD (LKU)

DME required.		MISSED APPROACH: Climb to 2900 direct GVE VORTAC and hold.
AWOS-3 <b>119.475</b>	POTOMAC APP CON <b>132.85 323.125</b>	UNICOM <b>122.975 (CTAF) 0</b>



ELEV 494	TDZE 494	MSA GVE 25 NM 4900 2000 045° 225°			
2900	GVE	OVILY I-LKU 2.2	LUYIS I-LKU 6.3	JODKA I-LKU 12.3	One Minute Holding Pattern
I-LKU 0.8	I-LKU 1.7	2300	272°	092° → 4900	← 272° 2900
0.9 NM	0.5 NM	4.2 NM	6 NM		
CATEGORY	A	B	C	D	
S-LOC 27	820-1	326 (400-1)			NA
CIRCLING	900-1 406 (500-1)	960-1 466 (500-1)			NA

NE-3, 13 JUN 2024 to 11 JUL 2024

NE-3, 13 JUN 2024 to 11 JUL 2024