

WAAS CH <b>48843</b> <b>W09A</b>	APP CRS <b>092°</b>	Rwy Idg TDZE Apt Elev	<b>4300</b> <b>489</b> <b>494</b>
--	------------------------	-----------------------------	---

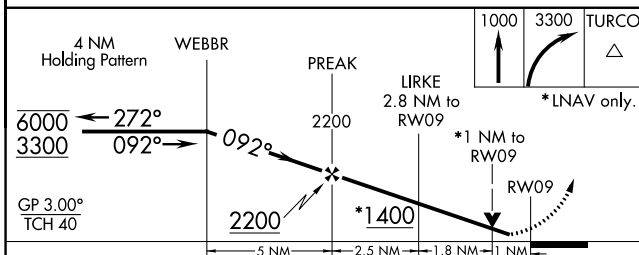
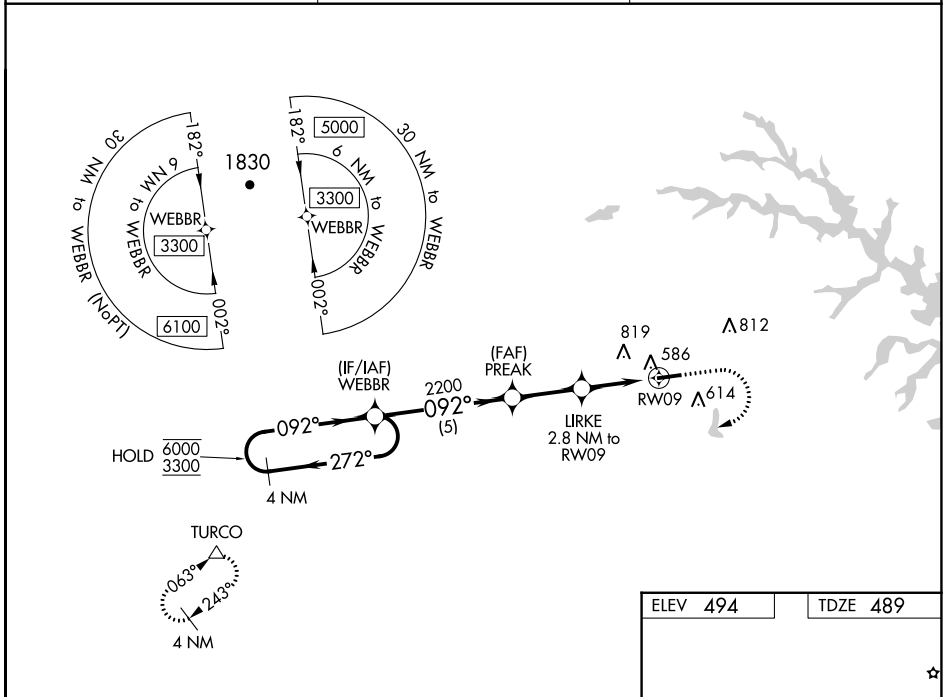
**RNAV (GPS) RWY 9**  
LOUISA COUNTY/FREEMAN FLD (LKU)

RNP APCH.

⚠ Circling NA north of Rwy 9-27. Rwy 9 helicopter visibility reduction below 3/4 SM NA.  
 ⚠ For uncompensated Baro-VNAV systems, LNAV/VNAV NA below -15°C or above 54° C.  
 When local altimeter setting not received, use Orange altimeter setting and increase LPV DA to 775 feet, LNAV/VNAV DA to 784 feet and MDA 40 feet; increase LPV and LNAV/VNAV visibility 1/2 SM. Baro-VNAV and VDP NA when using Orange altimeter setting.

MISSED APPROACH: Climb to 1000 then climbing right turn to 3300 direct TURCO and hold.

AWOS-3 <b>119,475</b>	POTOMAC APP CON <b>132.85 323.125</b>	UNICOM <b>122.975</b> (CTAF) <b>📞</b>
--------------------------	--	--



ELEV 494	TDZE 489
----------	----------

092° heading, 0.6% UP slope, 4300 X 100 runway width.

REIL Rwy 9 and 27 **📞**  
MIRL Rwy 9-27 **📞**

CATEGORY	A	B	C	D
LPV DA	739-3/4	250 (300-3/4)		NA
LNAV/VNAV DA	748-3/4	259 (300-3/4)		NA
LNAV MDA	840-1	351 (400-1)		NA
ⓐ CIRCLING	900-1 406 (500-1)	960-1 466 (500-1)		NA

NE-3, 13 JUN 2024 to 11 JUL 2024

NE-3, 13 JUN 2024 to 11 JUL 2024