

WAAS CH <b>69438</b> <b>W10A</b>	APP CRS <b>096°</b>	Rwy Idg TDZE Apt Elev	<b>5002</b> <b>240</b> <b>240</b>
----------------------------------------	------------------------	-----------------------------	-----------------------------------------

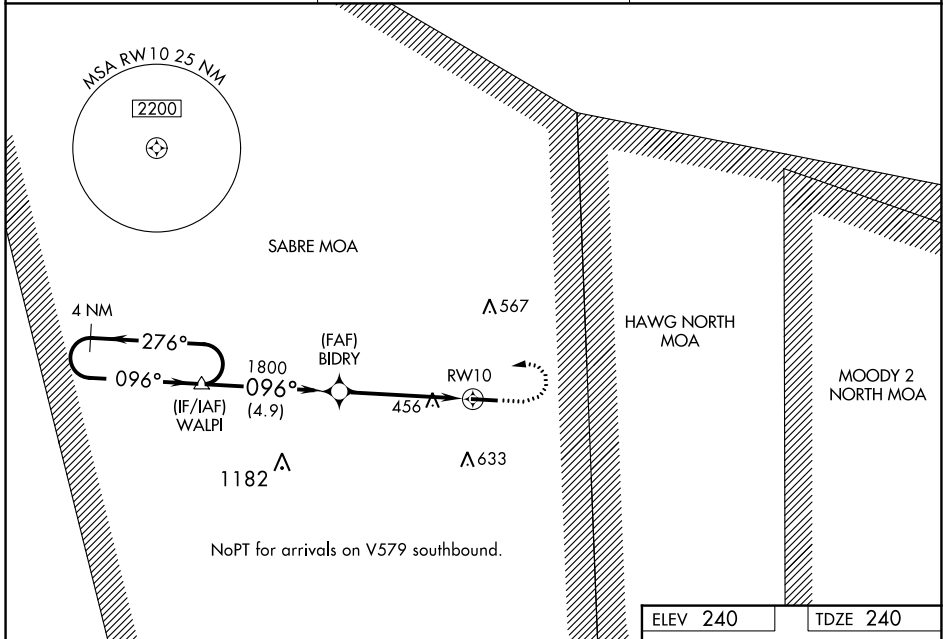
# RNAV (GPS) RWY 10

BERRIEN COUNTY (4J2)

**⚠** Baro-VNAV NA. DME/DME RNP-0.3 NA. Helicopter visibility reduction below 3/4 SM NA. Use Moody AFB altimeter setting. When not received, use Douglas altimeter setting and increase all DA 24 feet and MDA 40 feet; increase LNAV/VNAV all Cats visibility 1/8 mile and increase LNAV Cat C and Circling Cat C visibility 1/4 mile. Night landing: Rwy 28 NA.

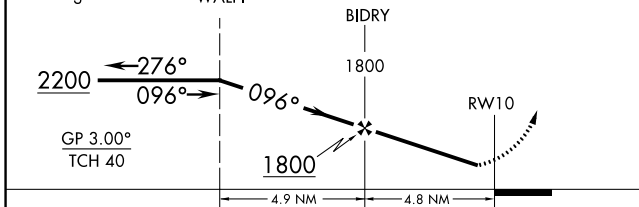
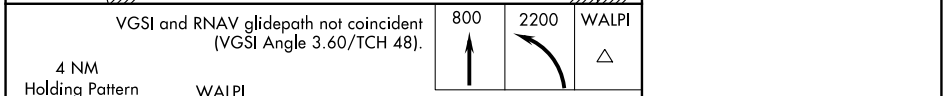
**⚠** MISSED APPROACH: Climb to 800 then climbing left turn to 2200 direct WALPI and hold.

KVAD ATIS ★ <b>273.5</b>	VALDOSTA APP CON ★ <b>126.6 285.6</b>	UNICOM <b>122.7 (CTAF) 0</b>
-----------------------------	------------------------------------------	---------------------------------



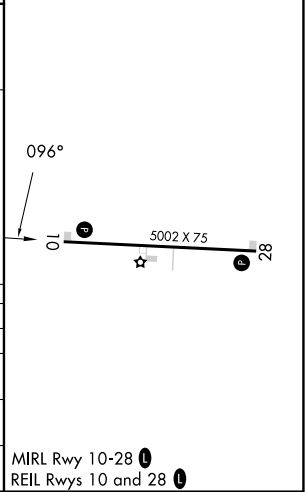
SE-4, 13 JUN 2024 to 11 JUL 2024

SE-4, 13 JUN 2024 to 11 JUL 2024



ELEV 240	TDZE 240
----------	----------

CATEGORY	A	B	C	D
LPV DA	560-1 1/8	320 (400-1 1/8)		NA
LNAV/VNAV DA	793-1 7/8	553 (600-1 7/8)		NA
LNAV MDA	760-1	520 (600-1)	760-1 3/8 520 (600-1 3/8)	NA
<b>C</b> CIRCLING	820-1	580 (600-1)	980-2 740 (800-2)	NA



MIRL Rwy 10-28 0  
REL Rwy 10 and 28 0