

IZZ0 EIGHT DEPARTURE (RNAV)

AL-6915 (FAA)

GLENDALE MUNI (GEU)
GLENDALE, ARIZONA

SW-4, 13 JUN 2024 to 11 JUL 2024

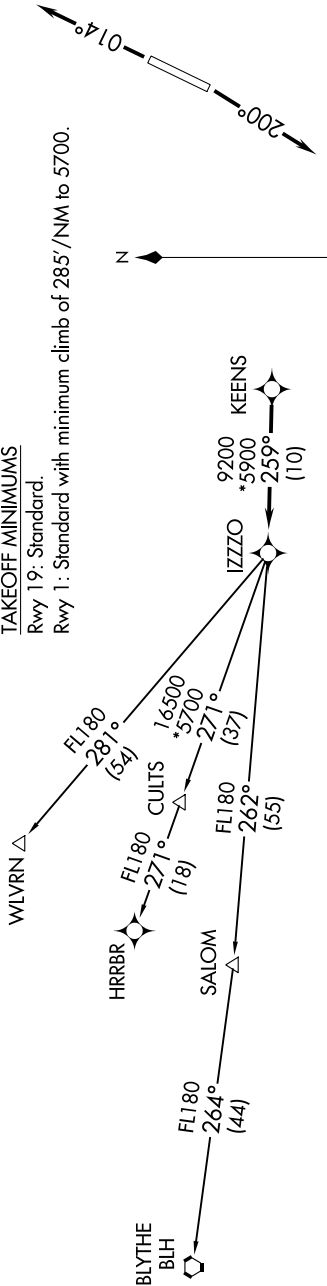
TOP ALTITUDE: ASSIGNED BY ATC

LUKE DEP CON*
118.15 363.125
PHOENIX DEP CON
120.7 239.0
ATIS
119.425
GND CON
118.0
GLENDALE TOWER*
121.0

NOTE: Turbojets and turboprops only.
NOTE: Aircraft requesting FL220 and below must file BLYTHE Transition.
NOTE: Turbojets landing LAX, file WLVRN Transition.
NOTE: Aircraft landing other than LAX and turboprops landing at LAX: Requesting FL240 and above, file HRRBR Transition.
NOTE: Aircraft departing KGEU and KGYR ATC assigned only.

TAKEOFF MINIMUMS

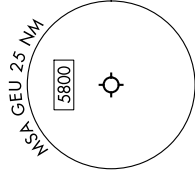
Rwy 19: Standard.
Rwy 1: Standard with minimum climb of 285'/NM to 5700.



DEPARTURE ROUTE DESCRIPTION

TAKEOFF RUNWAY 1: Climb on heading 014° or as assigned by ATC, thence. . . .
TAKEOFF RUNWAY 19: Climb on heading 200° or as assigned by ATC, thence. . . .
...for RADAR vectors to KEENS, then on track 259° to IZZO, then on (transition).
Maintain ATC assigned altitude, expect filed altitude 3 minutes after departure.

BLYTHE TRANSITION (IZZ08.BLH)
HRRBR TRANSITION (IZZ08.HRRBR)
WLVRN TRANSITION (IZZ08.WLVRN)



NOTE: Chart not to scale.

IZZ0 EIGHT DEPARTURE (RNAV)

SW-4, 13 JUN 2024 to 11 JUL 2024