

LOC I-JZW 110.95	APP CRS 357°	Rwy Idg 6002	TDZE 697
		Apt Elev 700	

ILS or LOC RWY 36L

FORT WORTH SPINKS (FWS)

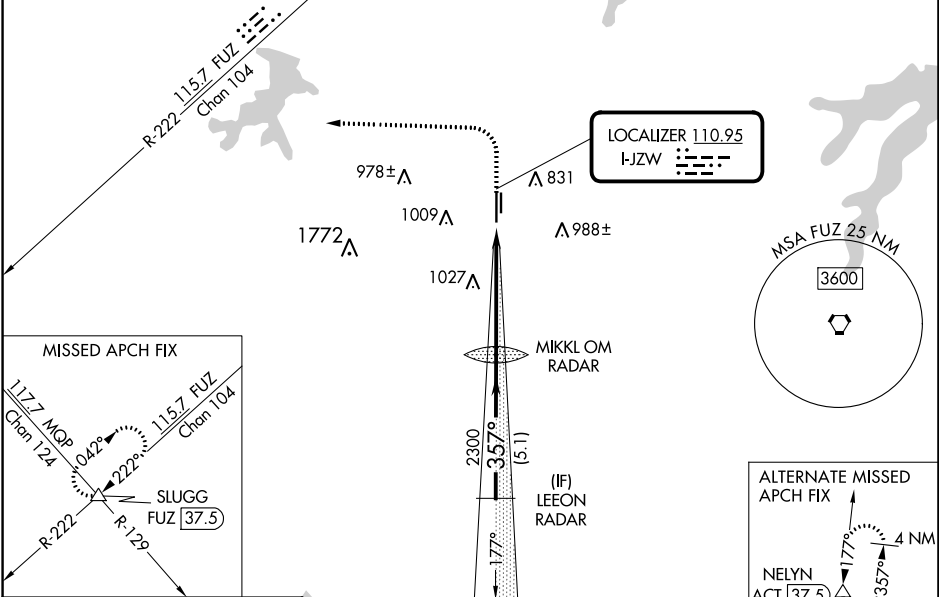
RADAR required for procedure entry.

NA Circling NA west of Rwy 18R-36L. For inop ALS increase S-LOC 36L Cat C/D visibility to 1 1/4 SM.

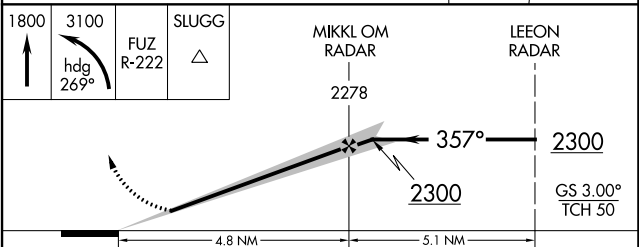
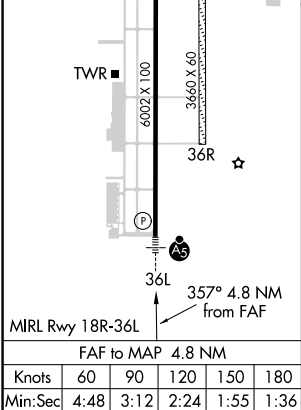
MALS R

MISSED APPROACH: Climb to 1800 then climbing left turn to 3100 on heading 269° and FUZ VORTAC R-222 to SLUGG INT/ FUZ 37.5 DME and hold.

ATIS 120.025	REGIONAL APP CON 135.975 379.9	SPINKS TOWER ★ 124.625 (CTAF)	GND CON 119.475	UNICOM 122.7
------------------------	--	---	---------------------------	------------------------



ELEV 700	TDZE 697
----------	----------



CATEGORY	A	B	C	D
S-ILS 36L	897-1/2 200 (200-1/2)			
S-LOC 36L	1320-1/2 623 (700-1/2)	1320-1 3/8 623 (700-1 3/8)		
CIRCLING	1320-1 620 (700-1)	1340-1 3/4 640 (700-1 3/4)	1340-2 640 (700-2)	

SC-2, 13 JUN 2024 to 11 JUL 2024

SC-2, 13 JUN 2024 to 11 JUL 2024